

TECHNICAL MANUAL

ORGANIZATIONAL, DIRECT SUPPORT, AND

GENERAL SUPPORT

MAINTENANCE REPAIR PARTS AND

SPECIAL TOOLS LIST

(INCLUDING DEPOT MAINTENANCE REPAIR

PARTS AND SPECIAL TOOLS)

FOR

AMPLIFIER, ATTENUATOR MODULE

AM-7058/MSQ-114

(NSN 5895-01-088-2608)

HEADQUARTERS, DEPARTMENT OF THE ARMY
14 JANUARY 1983

**ORGANIZATIONAL, DIRECT SUPPORT, AND GENERAL SUPPORT
 MAINTENANCE REPAIR PARTS AND SPECIAL TOOLS LIST
 (INCLUDING DEPOT MAINTENANCE REPAIR PARTS AND
 SPECIAL TOOLS)
 FOR
 AMPLIFIER ATTENUATOR MODULE
 AM-7058/MSQ-114
 (NSN 5895-01-088-2608)**

Current as of 30 July 1982

REPORTING OF ERRORS AND RECOMMENDING IMPROVEMENTS

You can help improve this manual. If you find any mistakes or if you know of a way to improve the procedures, please let us know. Mail your letter, DA Form 2028 (Recommended Changes to Publications and Blank Forms), or DA Form 2028-2 located in the back of this manual direct to: Commander, US Army Communications-Electronics Command and Fort Monmouth, ATTN: DRSELME-MP, Fort Monmouth, New Jersey 07703.

In either case, a reply will be forwarded direct to you.

Table of Contents

			Page	Illus Figure
SECTION	I.	Introduction.....	1	
GROUP	II.	Repair Parts List.....	5	
	07	Amplifier Attenuator Module AM-7058/MSQ-114.....	5	1
		0701 IPA Attenuator Module	13	2
		070101 APC/Monitor Assembly (No parts authorized)		
		070102 SHF Voltage Variable Attenuator (No parts authorized)		
		070103 SHF Programmable Attenuator (No parts authorized)		
	070104 APC/Monitor Assembly	21	3	
	070105 Universal Interface Control.....	25	4	
SECTION	III.	Special Tools List (Not applicable)		
	IV.	National Stock Number and Part Number Index	25	

SECTION I

INTRODUCTION

1. Scope

This manual lists spares and repair parts, special tools; special test, measurement, and diagnostic equipment (TMDE), and other special support equipment required for performance of organizational, direct support, and general support maintenance of the AM-7058/MSQ-114. It authorizes the requisitioning and issue of spares and repair parts as indicated by the source and maintenance codes.

2. General

This Repair Parts and Special Tools List is divided into the following sections.

a. Section II Repair Parts List. A list of spares and repair parts authorized for use in the performance of maintenance. The list also includes parts which must be removed for replacement of the authorized parts. Parts lists are composed of functional groups in numeric sequence, with the parts in each group listed in figure and item number sequence.

b. Section III Special Tools List. Not applicable.

c. Section IV National Stock Number and Part Number Index. A list, in National item identification number (NIIN) sequence, of all National stock numbers (NSN) appearing in the listings, followed by a list, in alphameric sequence, of all part numbers appearing in the listings. National stock numbers and part numbers are cross-referenced to each illustration figure and item number appearance.

3. Explanation of Columns

a. Illustration. This column is divided as follows:

(1) *Figure number.* Indicates the figure number of the illustration on which the item is shown.

(2) *Item number.* The number used to identify item called out in the illustration.

b. Source, Maintenance, and Recoverability (SMR) Codes

(1) *Source code.* Source codes indicate the manner of acquiring support items for maintenance, repair, or overhaul of end items. Source codes are entered in the first and second positions of the Uniform SMR Code format as follows:

<i>Code</i>	<i>Definition</i>
PA -	Item procured and stocked for anticipated or known usage.
PD -	Support item, excluding support equipment, procured for initial issue or outfitting and stocked only for subsequent or additional initial issues or outfittings. Not subject to automatic replenishment.
XA -	Item is not procured or stocked because the requirements for the item will result in the replacement of the next higher assembly.
XB -	Item is not procured or stocked. If not available through salvage, requisition.
XD -	A support item that is not stocked. When required, item will be procured through normal supply channels.

NOTE

Cannibalization or salvage may be used as a source of supply for any items source coded above except those coded XA and aircraft support items as restricted by AR 700-42.

(2) *Maintenance code.* Maintenance codes are assigned to indicate the levels of maintenance authorized to USE and REPAIR support items. The maintenance codes are entered in the third and fourth positions of the Uniform SMR Code format as follows:

(a) The maintenance code entered in the third position will indicate the lowest maintenance level authorized to remove, replace, and use the support item. The maintenance code entered in the third position will indicate one of the following levels of maintenance:

<i>Code</i>	<i>Application/Explanation</i>
O -	Support item is removed, replaced, used at the organizational level.
F -	Support item is removed, replaced, used at the direct support level
H -	Support item is removed, replaced, used at the general support level.
D -	Support items that are removed, replaced, used at depot, mobile depot, specialized repair activity only.

(b) The maintenance code entered in the fourth position indicates whether the item

is to be repaired and identifies the lowest maintenance level with the capability to perform complete repair (i.e., all authorized maintenance functions). This position will contain one of the following maintenance codes:

Code	Application/Explanation
H -	The lowest maintenance level capable of complete repair of the support item is the general support level.
D -	The lowest maintenance level capable of complete repair of the support item is the depot level.
Z -	Nonreparable. No repair is authorized.

(3) *Recoverability code.* Recoverability codes are assigned to support items to indicate the disposition action on unserviceable items. The recoverability code is entered in the fifth position of the Uniform SMR Code format as follows:

Recoverability Codes	Definition
Z -	Nonreparable item. When unserviceable, condemn and dispose at the level indicated in position 3.
H -	Reparable item. When uneconomically reparable, condemn and dispose at the general support level.
D -	Reparable item. When beyond lower level repair capability, return to depot. Condemnation and disposal not authorized below depot level.
L -	Reparable item. Repair, condemnation, and disposal not authorized below depot/specialized repair activity level.

c. *National Stock Number.* Indicates the National stock number assigned to the item and will be used for requisitioning purposes.

d. *Federal Supply Code for Manufacturer (FSCM).* The FSCM is a 5-digit numeric code listed in SB 708-41/42 which is used to identify the manufacturer, distributor, or Government agency, etc.

e. *Part Number.* Indicates the primary number used by the manufacturer (individual, company, firm, corporation, or Government activity), which controls the design and characteristics of the item by means of its engineering drawings, specifications, standards, and inspection requirements to identify an item or range of items.

NOTE

When a stock numbered item is requisitioned, the repair part received may have a different part number than the part being replaced.

f. *Description.* Indicates the Federal item name and, if required, a minimum description to identify the item.

g. *Unit of Measure (U/M).* Indicates the standard of the basic quantity of the listed item as used in performing the actual maintenance function. This measure is expressed by a two-character alphabetical abbreviation (e.g., ea, m, pr, etc). When the unit of measure differs from the unit of issue, the lowest unit of issue that will satisfy the required units of measure will be requisitioned

h. *Quantity Incorporated in Unit.* Indicates the quantity of the item used in the breakout shown on the illustration figure, which is prepared for a functional group, subfunctional group, or an assembly.

4. Special Information

a. The following publications pertain to the AM-7058/MSQ-114 and its components: TM 11-5895-1103-34, Amplifier, Attenuator Module, AM-7058/MSQ-114 (To be published).

b. National stock numbers (NSN's) that are missing from P source coded items have been applied for and will be added to this TM by future change/revision when they are entered in the Army Master Data File (AMDF). Until the NSN's are established and published, submit exception requisitions to: Commander, US Army Communications-Electronics Command and Fort Monmouth, ATTN: DRSEL-MM, Fort Monmouth, New Jersey 07703 for the part required to support your equipment.

5. How to Locate Repair Parts

a. When National stock number or part number is unknown.

(1) *First.* Using the table of contents, determine the functional group within which the item belongs. This is necessary since illustrations are prepared for functional groups and listings are divided into the same groups.

(2) *Second.* Find the illustration covering the functional group to which the item belongs.

(3) *Third.* Identify the item on the Illustration and note the illustration figure and item number of the item.

(4) *Fourth.* Using the Repair Parts Listing, find the figure and item number noted on the illustration.

b. When National stock number or part number is known.

(1) *First.* Using the Index of National Stock Numbers and Part Numbers, find the pertinent National stock number or part number. This index is in NIIN sequence followed by a list of part numbers in alphabetic sequence, cross-referenced to the illustration figure number and item number.

(2) *Second.* After finding the figure and item number, locate the figure and item number in the repair parts list.

6. Abbreviations

Not applicable.

(Next printed page is 4.1)

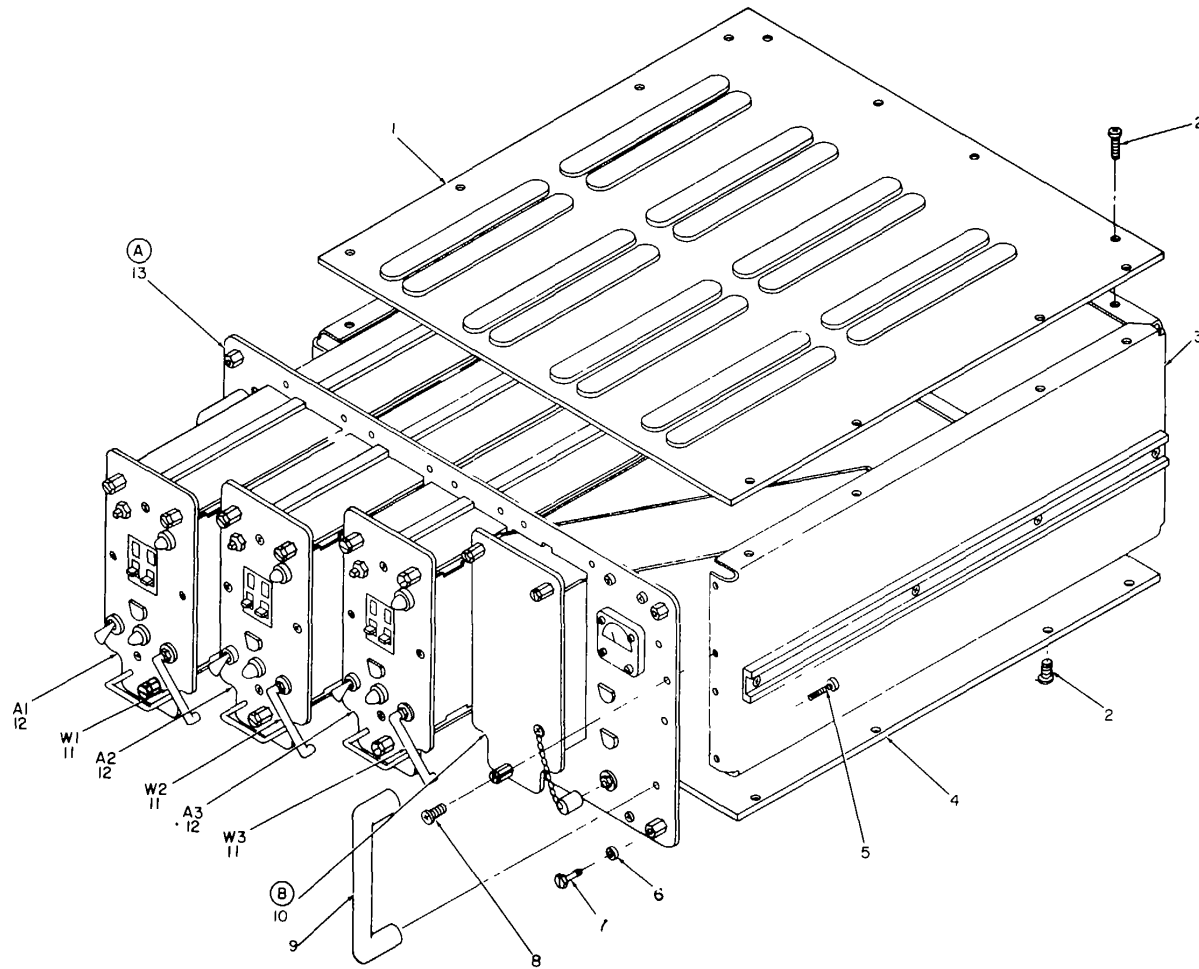


Figure 1. Amplifier Attenuator Module AM-7058/MSQ-114 (Sheet 1 of 6).

EL6SV001

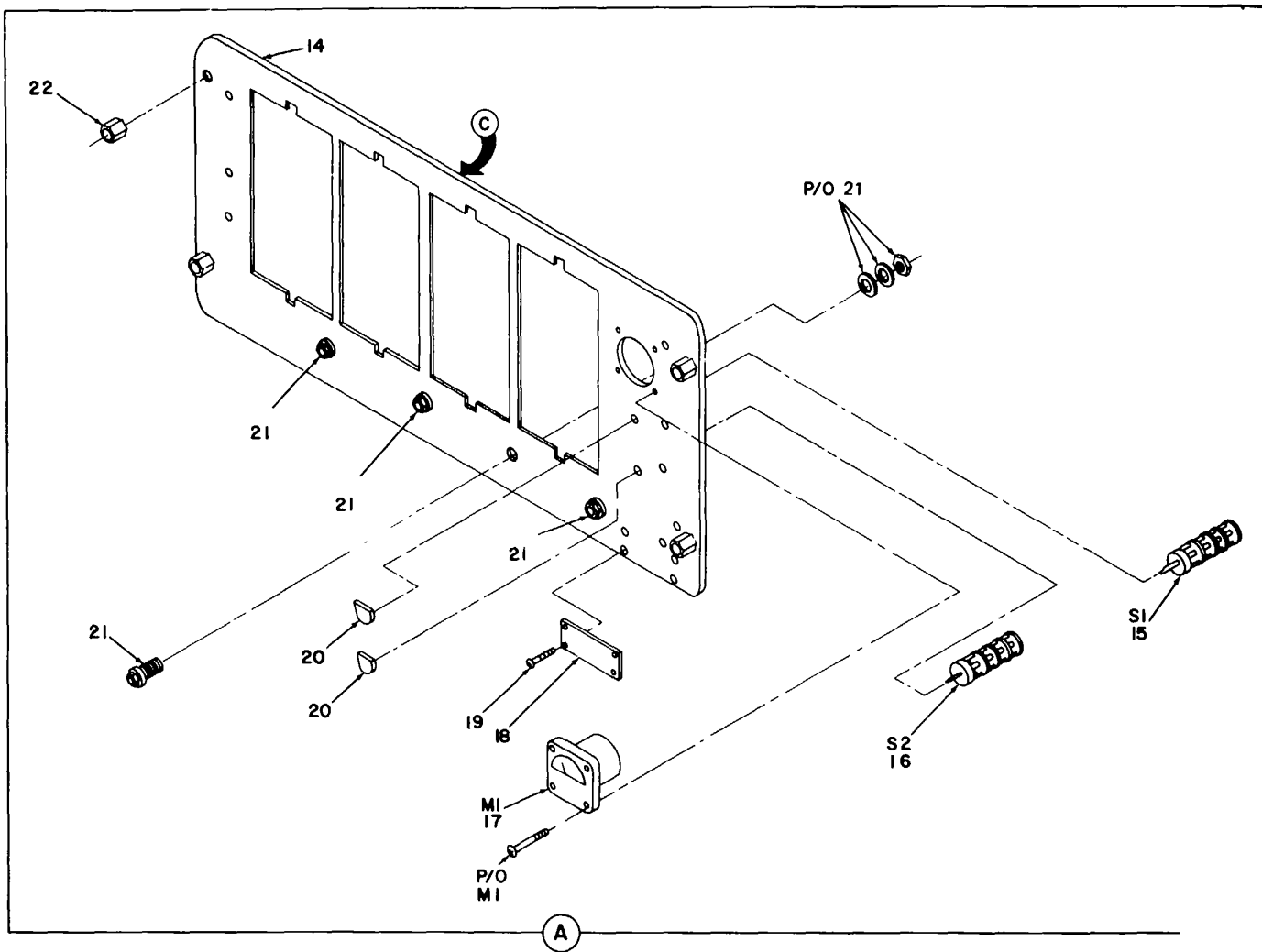
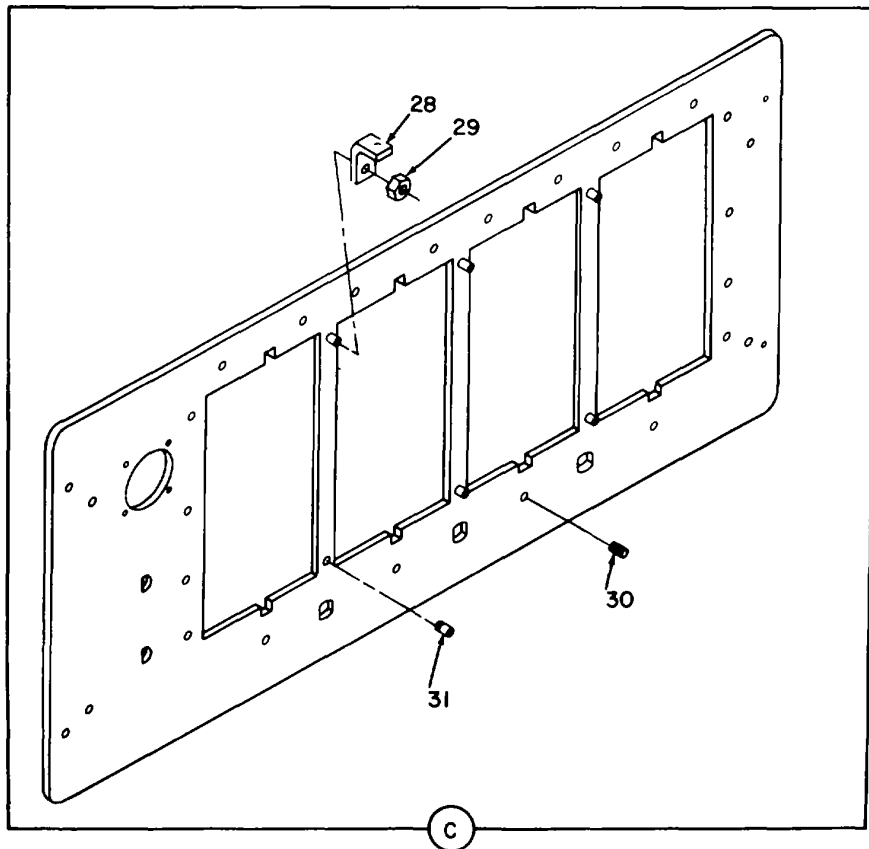
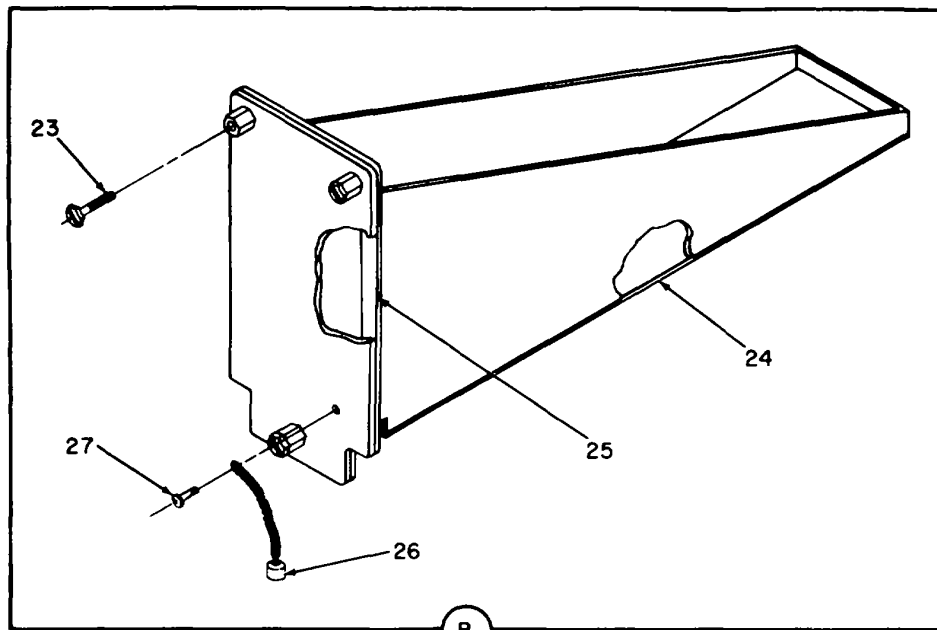
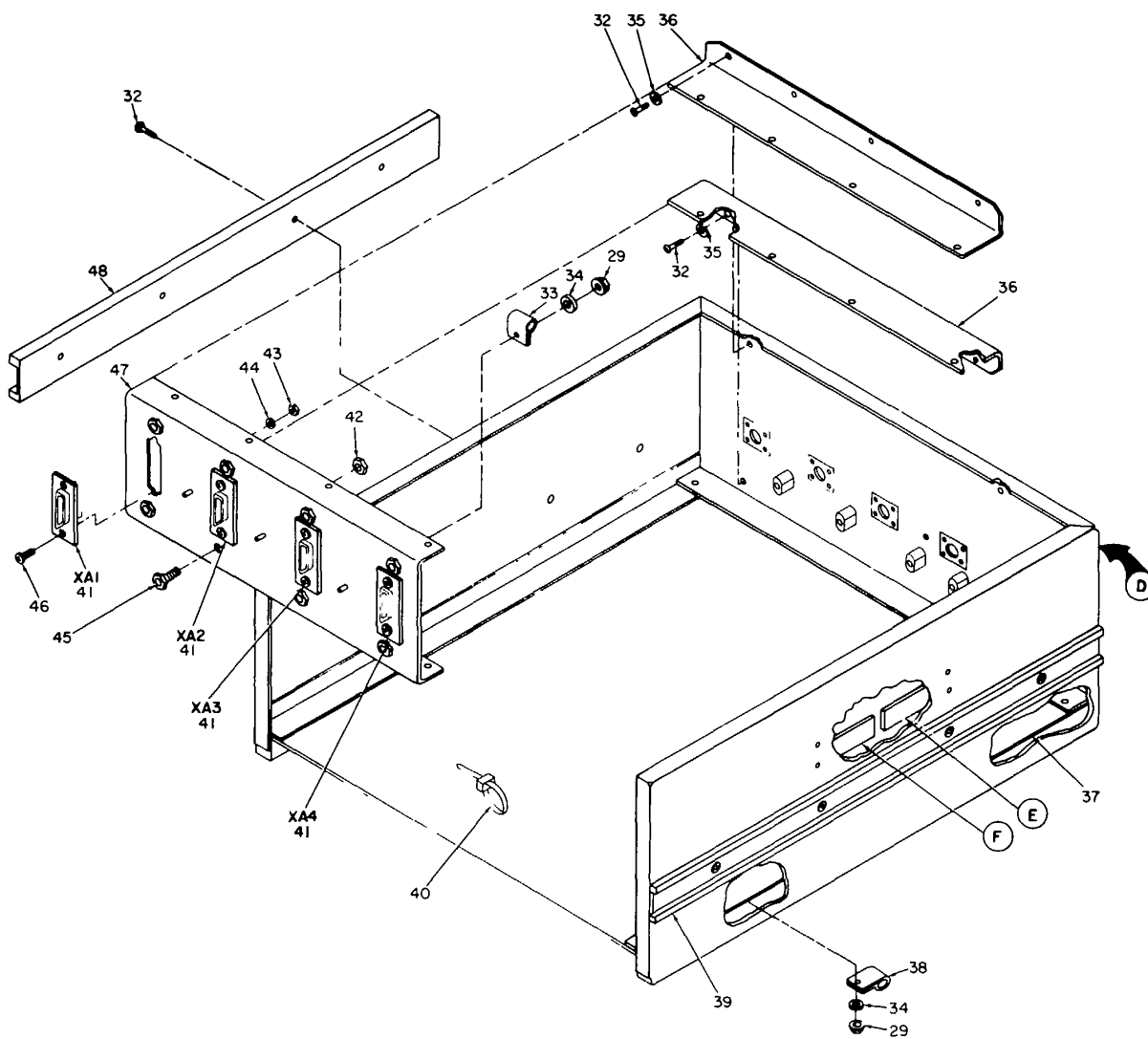


Figure 1. Amplifier Attenuator Module AM-7058/MSQ-114 (Sheet 2 of 6).



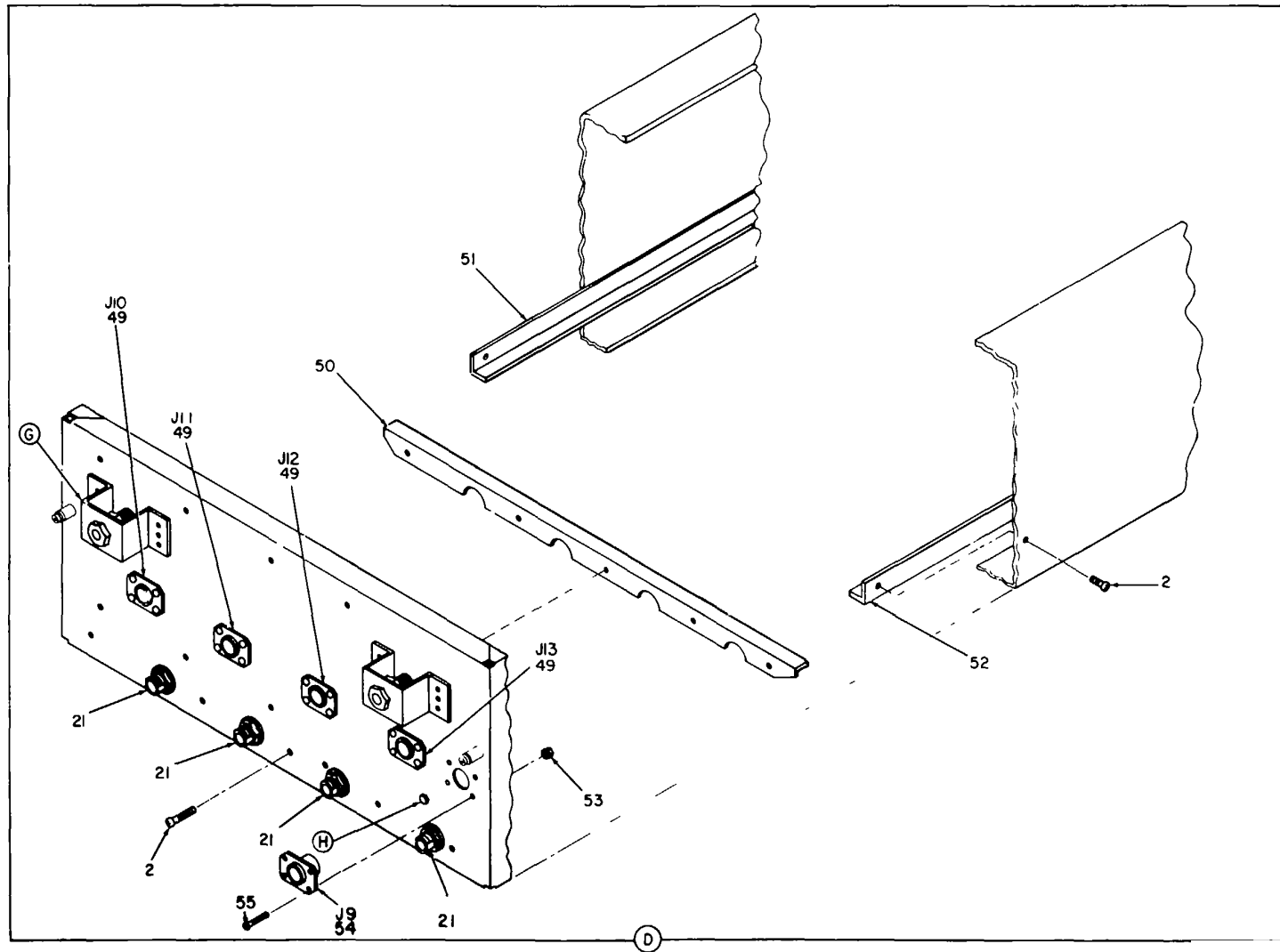
EL6SV003

Figure 1. Amplifier Attenuator Module AM-7058/MSQ-114 (Sheet 3 of 6).



EL6SV004

Figure 1. Amplifier Attenuator Module AM-7058/MSQ-114 (Sheet 4 of 6).



EL6SV005

Figure 1. Amplifier Attenuator Module AM-7058/MSQ-114 (Sheet 5 of 6).

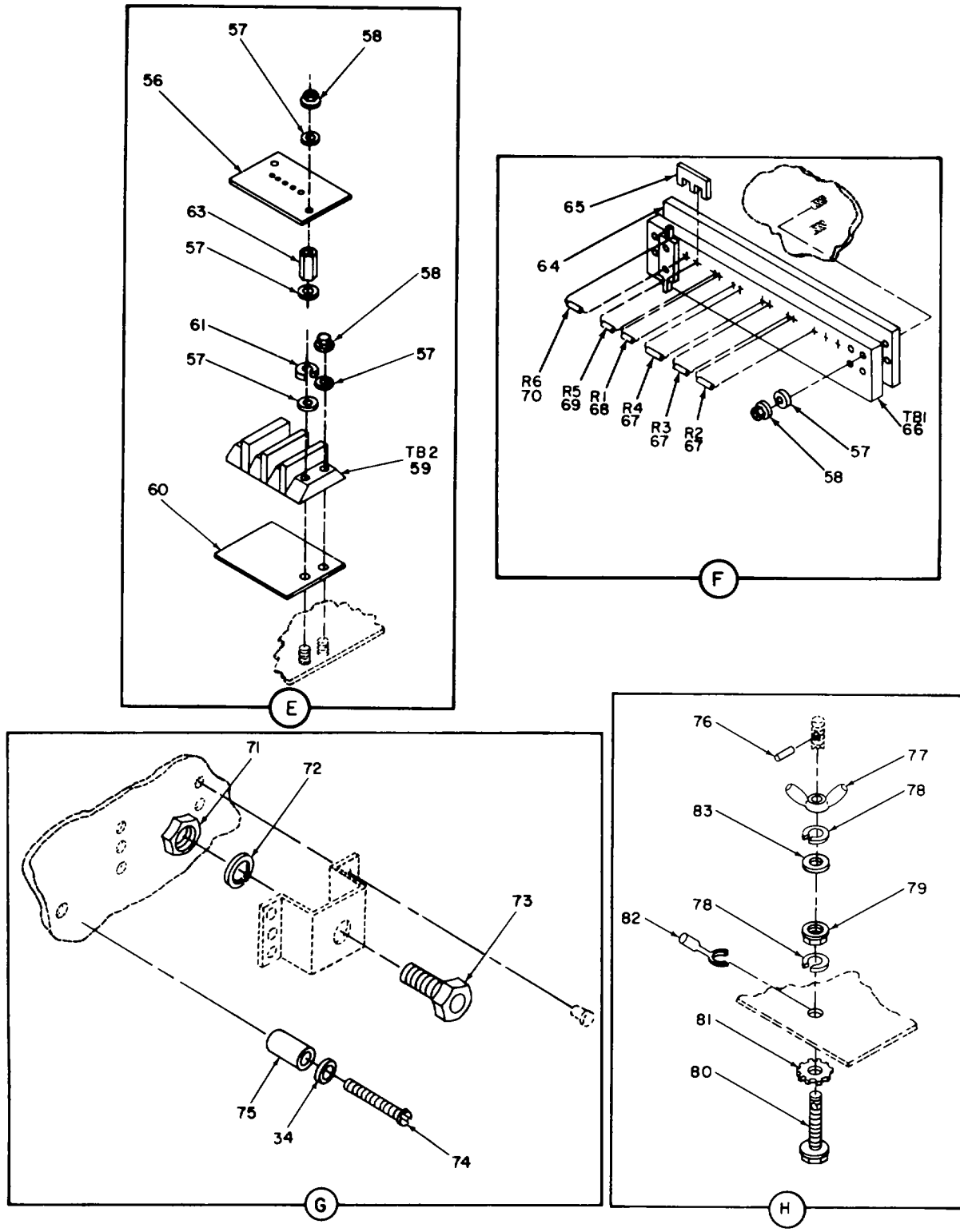


Figure 1. Amplifier Attenuator Module AM-7058/MSQ-114 (Sheet 6 of 6).

(1) ILLUSTRATION		(2)	(3)	(4)	(5)	(6) DESCRIPTION	(7)	(8)
(a) FIG NO.	(b) ITEM NO.	SMR CODE	NATIONAL STOCK NUMBER	FSCM	PART NUMBER	USABLE ON CODE	U/M	QTY INC IN UNIT
						GROUP 07 AMPLIFIER, ATTENUATOR MODULE AM-7058/MSQ-114		
1	1	XBDZZ		49671	8679841-1	COVER GUIDE TOP	EA	1
1	2	PAFZZ	5305-00-054-6669	96906	MS51957-44	SCREW, MACHINE	EA	36
1	3	XBHZZ		49671	8376328-501	CHASSIS ASSY	EA	1
1	4	XBOZZ		49671	8679843-501	COVER BOTTOM.....	EA	1
1	5	PAFZZ	5305-00-780-1131	96906	MS24693C72	SCREW, MACHINE	EA	4
1	6	PAFZZ	5330-00-947-4271	80205	NAS1598C3Y	PACKING WITH RETAIN	EA	4
1	7	PAFZZ	5306-01-070-8068	80063	SM-C-775486-6	BOLT, TARGET.....	EA	4
1	8	PAFZZ	5305-00-956-4470	96906	MS3212-25	SCREW PAN HEAD	EA	8
1	9	XBHZZ		06540	10859-A-1024-2	HANDLE BOW	EA	1
1	10	XBHHH		49671	8679970-501	PANEL ASSY	EA	1
1	11	PAOZZ	5995-01-123-1780	80063	SM-A-936547-37	CABLE ASSEMBLY.....	EA	3
1	12	PAODD	5895-01-108-0452	49671	8677042-501	MODULE, PLUG IN.....	EA	3
1	13	XBHZZ		49671	8679840-501	PANEL IPA/ATEN	EA	1
1	14	XBHZZ		49671	8679840-1	PANEL FRONT	EA	1
1	15	PAFZZ	5930-01-106-0758	49671	8560085-1	SWITCH ROTARY	EA	1
1	16	PAFZZ	5930-01-106-0759	49671	8560084-1	SWITCH ROTARY	EA	1
1	17	PAFZZ	6625-01-065-7300	65092	268527	AMMETER.....	EA	1
1	18	XBFZZ		49671	8557578-40	NAME PLATE.....	EA	1
1	19	PAFZZ	5305-00-054-5644	96906	MS51957-11	SCREW, MACHINE	EA	4
1	20	PAOZZ	5355-00-556-0145	96906	MS91528-1K2B	KNOB	EA	2
1	21	PADZZ		49671	8679964-527	CABLE ASSY RF	EA	4
1	22	XBHZZ		51397	LL15215	RETAINER CLINCH	EA	4
1	23	PAOZZ	5305-01-074-3353	80063	SM-B-775527-5	SCREW, EXTERNALLY RE	EA	3
1	24	PAHZZ	5330-01-107-3322	49671	8679970-7	GASKET	EA	1
1	25	PAHZZ	5330-01-115-8229	49671	8785316-1	GASKET	EA	1
1	26	PAFZZ	5935-00-113-0352	81349	M39012/25-0011	COVER, ELECTRICAL CO	EA	1
1	27	PAFZZ	5305-00-054-5646	96906	MS51957-12	SCREW, MACHINE	EA	1
1	28	XBHZZ		49671	8158972-501	BRACKET COVER.....	EA	6
1	29	PAFZZ	5310-00-878-7196	96906	MS21043-08	NUT, SELF-LOCKING, EX	EA	23
1	30	XBHZZ	5340-00-815-4929	96906	MS21209-C0815	INSERT, SCREW THREAD	EA	12
1	31	XBHZZ	5307-00-446-5361	46384	FHS-632-6	STUD, SELF-LOCKING.....	EA	6
1	32	PAFZZ	5305-00-460-0673	80205	NAS1635-3-7	SCREW, MACHINE	EA	16
1	33	XBFZZ	5340-00-989-9224	96906	MS25281R6	CLAMP, LOOP	EA	9
1	34	PAFZZ	5310-00-880-5978	96906	MS15795-807	WASHER, FLAT	EA	21
1	35	PAFZZ	5310-00-619-1148	96906	MS15795-808	WASHER, FLAT	EA	8
1	36	XBHZZ		49671	8783488-501	FRAME SUPPORT.....	EA	2
1	37	XBOZZ		49671	8679842-501	COVER GUIDE B	EA	1
1	38	XBFZZ	5340-00-753-3456	96906	MS25281R2	CLAMP, LOOP	EA	8

(1) ILLUSTRATION		(2)	(3)	(4)	(5)	(6) DESCRIPTION	(7)	(8)
(a) FIG NO.	(b) ITEM NO.	SMR CODE	NATIONAL STOCK NUMBER	FSCM	PART NUMBER	USABLE ON CODE	U/M	QTY INC IN UNIT
1	39	XBHZZ		49671	8679945-4	SLIDE RS	EA	1
1	40	XBFZZ	5975-00-074-2072	96906	MS3367-1-9	STRAP, TIEDOWN, ELECT	EA	50
1	41	XAOZZ		81349	M24308/1-3	CONNECTOR, RECEPTACL	EA	4
1	42	PAFZZ	5310-00-881-0944	96906	MS21043-5	NUT, SELF-LOCKING, EX	EA	8
1	43	PADZZ	5310-00-813-6950	80205	NAS1291C02M	NUT, SELF-LOCKING, EX	EA	8
1	44	XOBZZ	5310-00-595-6761	96906	MS15795-802	WASHER, FLAT	EA	8
1	45	XBHZZ		49671	8158973-1	BSHG GUIDE PIN	EA	8
1	46	PAFZZ	5305-00-054-5640	96906	MS51957-6	SCREW, MACHINE	EA	8
1	47	XBHZZ		49671	8783487-501	FRAME CONN MTG	EA	1
1	48	XBHZZ		49671	8679944-4	SLIDE LEFT SIDE	EA	1
1	49	PAHZZ	5935-00-844-2737	96906	MS3110E12-10S	CONNECTOR, RECEPTACL	EA	4
1	50	XBHZZ		49671	8783491-501	SUPPORT GUIDE R	EA	1
1	51	XBHZZ		49671	8783489-501	SUPPORT GUIDE	EA	1
1	52	XBHZZ		49671	8783489-502	SUPPORT GUIDE	EA	1
1	53	PAFZZ	5310-00-878-3292	96906	MS21043-04	NUT, SELF-LOCKING, EX	EA	20
1	54	PAHZZ	5935-00-904-0778	96906	MS3110E12-3P	CONNECTOR, RECEPTACL	EA	1
1	55	PAFZZ	5305-00-236-1782	80205	NAS1635-04-7	SCREW, MACHINE	EA	20
1	56	XBOZZ		80063	SM-B-775477	COVER PROTECT	EA	1
1	57	PAFZZ	5310-00-722-5998	96906	MS15795-805	WASHER, FLAT	EA	12
1	58	PAFZZ	5310-00-878-9518	80205	NAS1291C06M	NUT, SLFLKG HEX	EA	10
1	59	XBHZZ		81349	37TBLD5	TERMINAL BOARD	EA	1
1	60	XBHZZ		80063	SM-C-B90627-13	MARKER STRIP TB	EA	1
1	61	PAFZZ	5310-00-929-6395	96906	MS35338-136	WASHER, LOCK	EA	1
1	62	PAFZZ	5310-00-934-9761	96906	MS35649-264	DELETED		
1	63	XBFZZ	5970-01-077-7914	80063	SM-B-775537-2	SPACER FLAT	EA	2
1	64	XBHZZ		80063	SM-C-890627-12	STRIP TB MARKER	EA	1
1	65	XBFZZ	5940-00-632-7234	75382	600J	BUS, CONDUCTOR	EA	3
1	66	XBHZZ		81349	37TBLD16	TERMINAL BOARD	EA	1
1	67	XDHZZ	5905-00-419-3904	81349	RNR60C4873FS	RESISTOR, FIXED, FILM	EA	3
1	68	PAHZZ	5905-00-242-2018	81349	RNR55C2003FS	RESISTOR, FIXED, FILM	EA	1
1	69	PAHZZ	5905-00-106-1278	81349	RCR07G123JS	RESISTOR, FIXED, COMP	EA	1
1	70	PAHZZ	5905-00-115-8055	81349	RCR07G393J5	RESISTOR, FIXED, COMP	EA	1
1	71	PAFZZ	5310-01-065-7120	80063	SM-B-777831	NUT, SPECIAL, HEXAGON	EA	2
1	72	PAFZZ	5310-00-184-9161	96906	MS35333-80	WASHER, LOCK	EA	2
1	73	XBHZZ		80063	SM-B-777826	BUSHING	EA	2
1	74	PAFZZ	5305-00-455-2575	96906	MS51957-128	SCREW, MACHINE	EA	4
1	75	XBNZZ		80063	SM-C-936705-1	POST BUMPER	EA	2
1	76	XBFZZ	5315-00-050-7577	96906	MS9048-35	PIN, SPRING	EA	1
1	77	PAFZZ	5310-00-063-6716	96906	MS35426-14	NUT, PLAIN, WING	EA	1
1	78	PAFZZ	5310-00-582-5965	96906	MS35338-44	WASHER, LOCK	EA	2

(1) ILLUSTRATION		(2)	(3)	(4)	(5)	(6)	(7)	(8)
(a) FIG NO.	(b) ITEM NO.	SMR CODE	NATIONAL STOCK NUMBER	FSCM	PART NUMBER	DESCRIPTION USABLE ON CODE	U/M	QTY INC IN UNIT
1	79	PAFZZ	5310-01-071-7203	78189	511-250100-50	NUT, PLAIN, ASSEMBLED	EA	1
1	80	PAHZZ	5305-01-065-7119	80063	SM-B-775557	SCREW, SPECIAL, GROUN	EA	1
1	81	PAFZZ	5310-00-627-6128	96906	MS35335-35	WASHER, LOCK	EA	1
1	82	XBHZZ	5940-00-143-4793	96906	MS25036-110	TERMINAL, LUG	EA	1
1	83	PAFZZ	5310-00-809-4058	96906	MS27183-10	WASHER, FLAT	EA	1

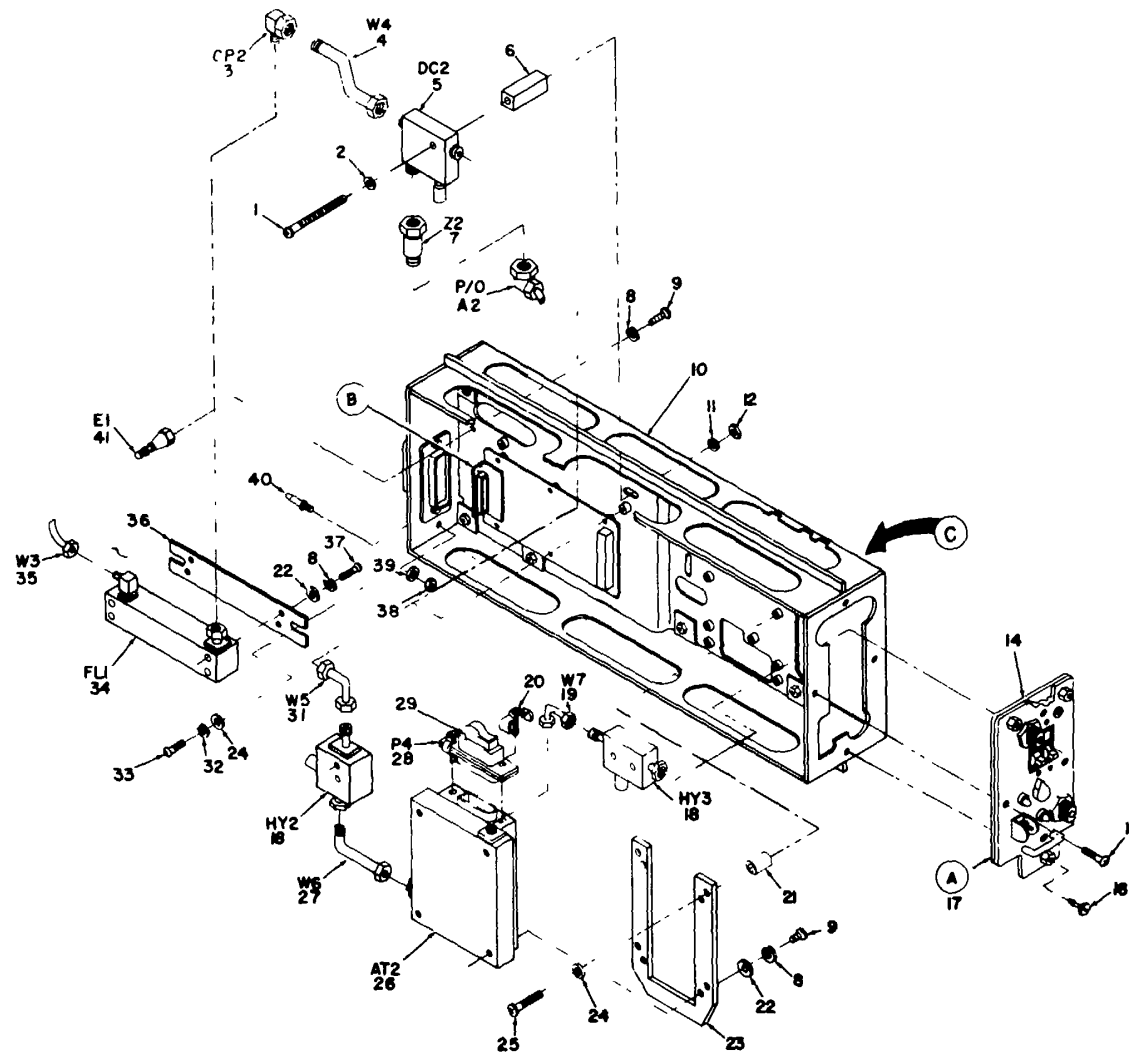
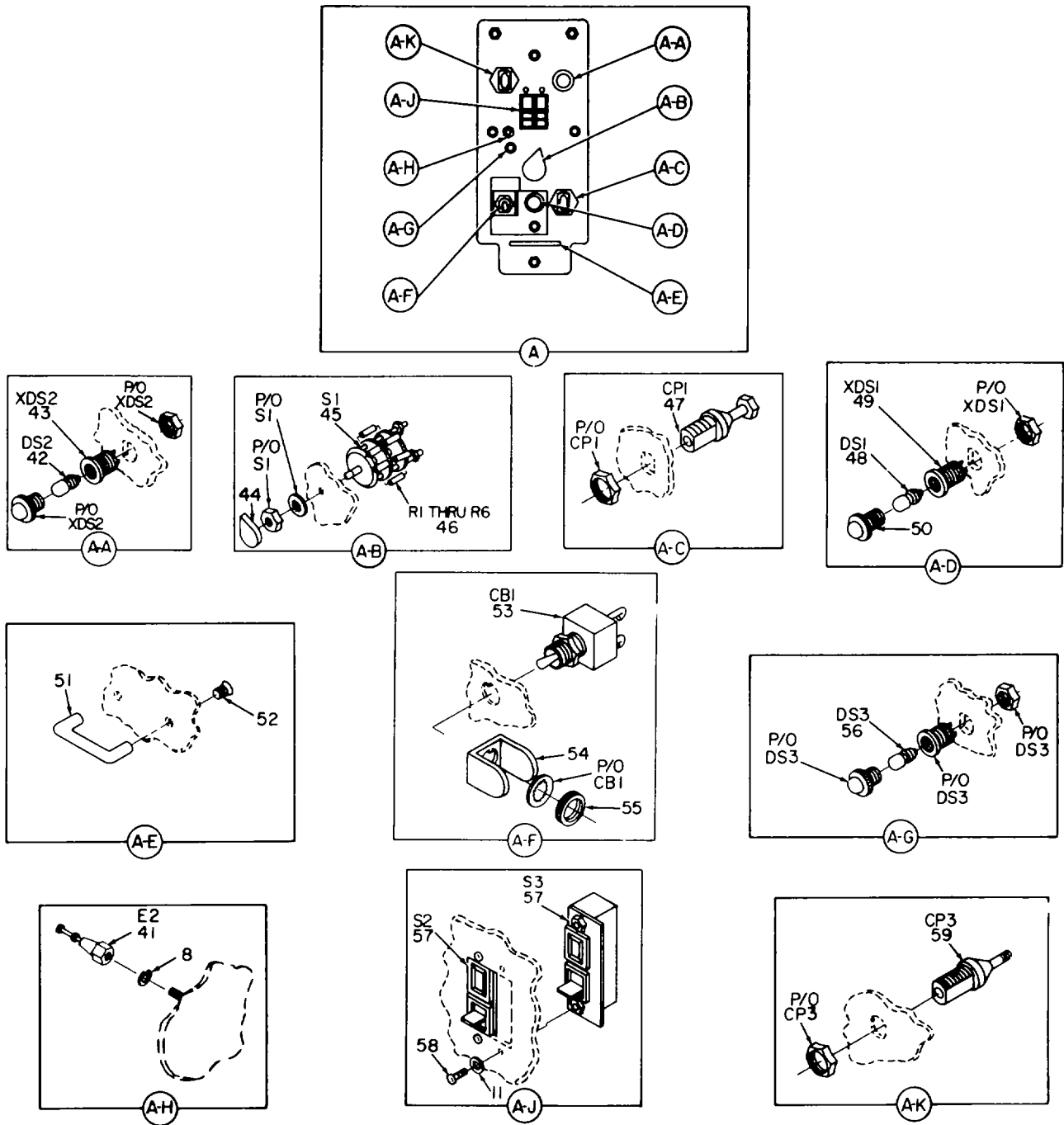
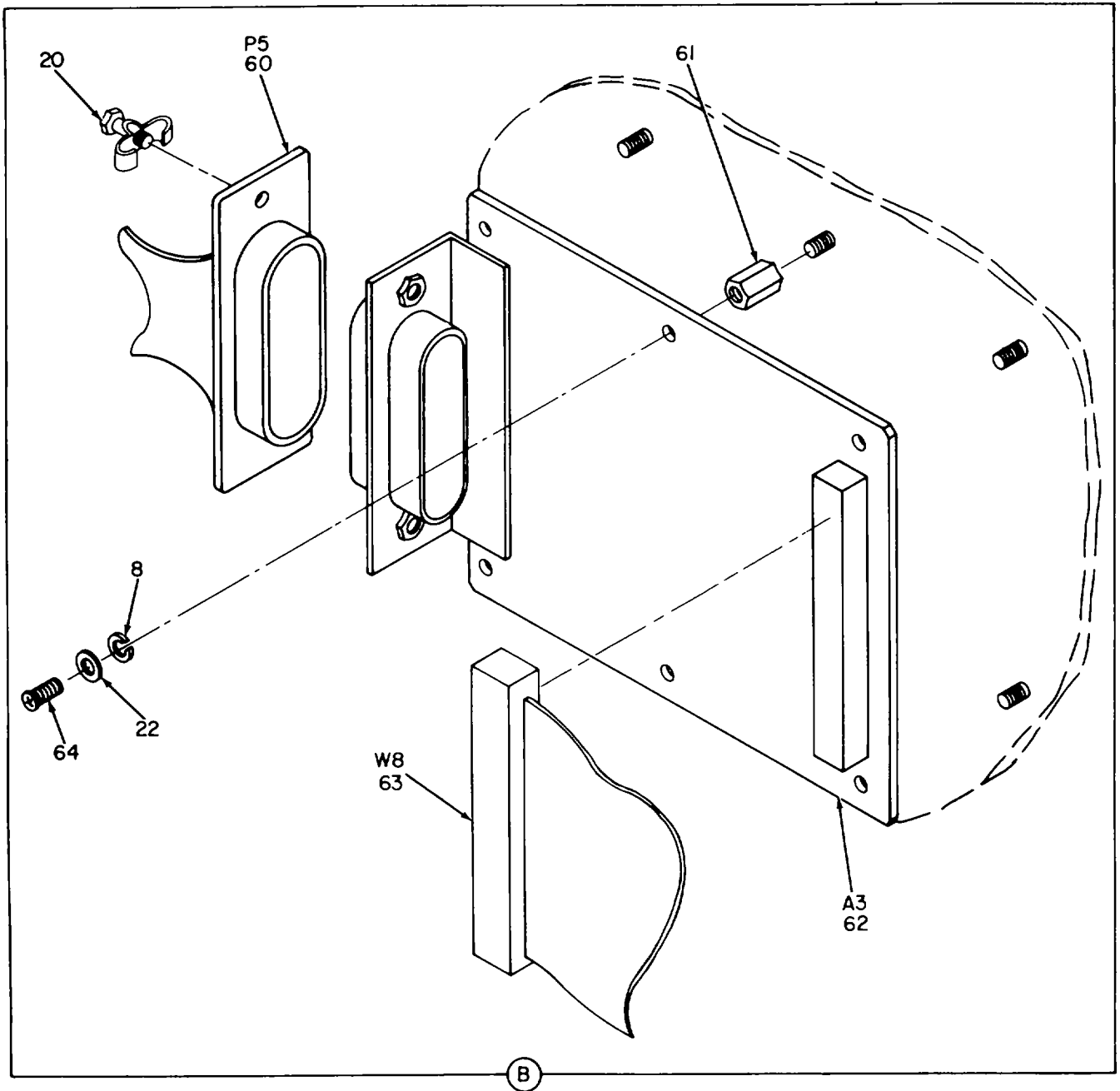


Figure 2. IPA Attenuator Module (Sheet 1 of 5).



EL6SV008

Figure 2. IPA Attenuator Module (Sheet 2 of 5).



EL6SV009

Figure 2. IPA Attenuator Module (Sheet 3 of 5).

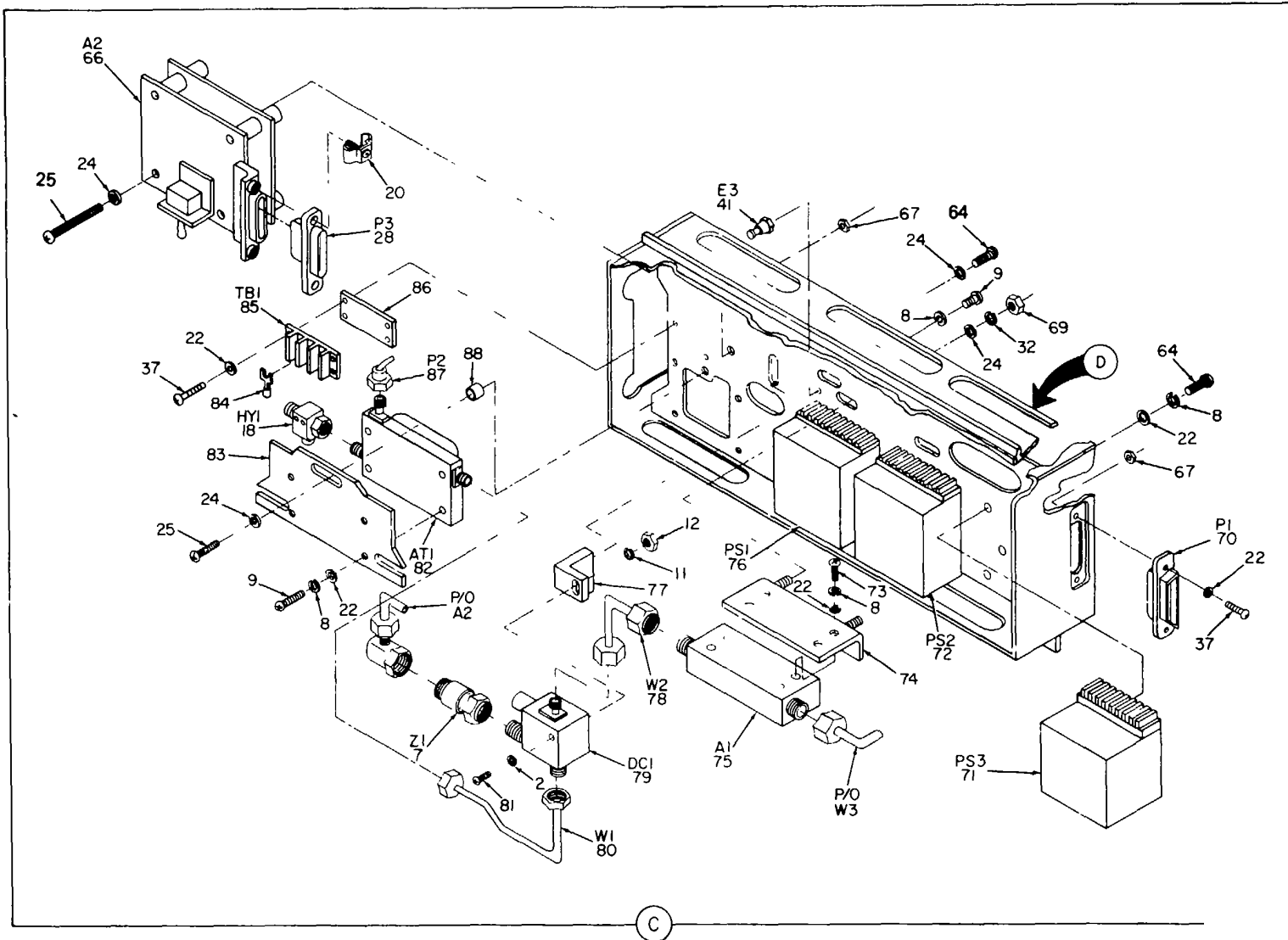
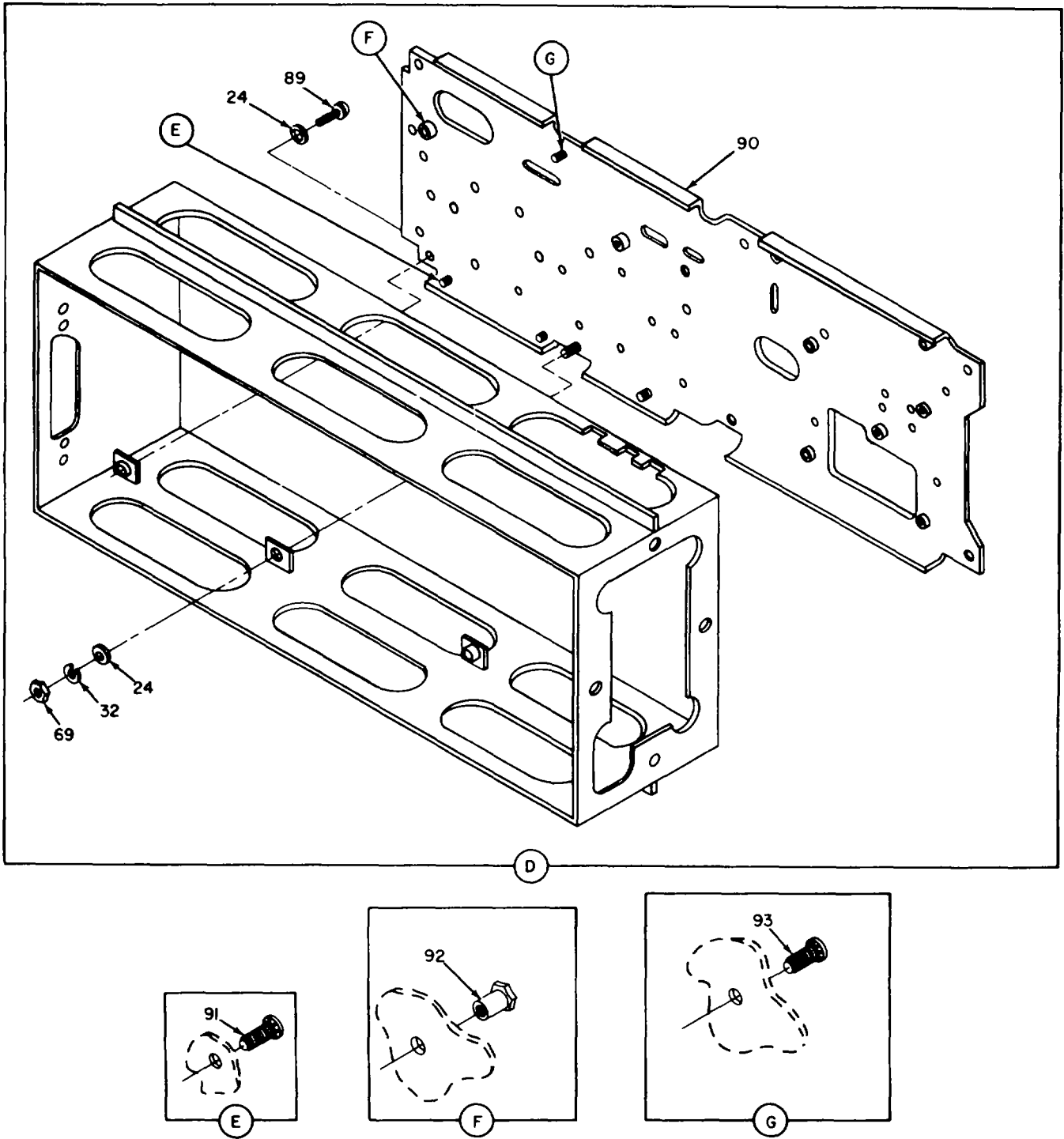


Figure 2. IPA Attenuator Module (Sheet 4 of 5).

EL6SB010



EL6SV011

Figure 2. IPA Attenuator Module (Sheet 5 of 5).

(1) ILLUSTRATION		(2)	(3)	(4)	(5)	(6) DESCRIPTION	(7)	(8)
(a) FIG NO.	(b) ITEM NO.	SMR CODE	NATIONAL STOCK NUMBER	FSCM	PART NUMBER	USABLE ON CODE	U/M	QTY INC IN UNIT
						GROUP 0701 IPA ATTENUATOR MODULE		
2	1	PADZZ	5305-00-812-6079	80205	NAS1635-02-20	SCREW, MACHINE.....	EA	1
2	2	PADZZ	5310-00-595-6761	96906	MS15795-802	WASHER, FLAT.....	EA	2
2	3	PADZZ	5935-01-076-7039	02154	2088-0000-00	ADAPTER, RADIO FREQU.....	EA	1
2	4	PADZZ	5995-01-115-0828	49671	8679964-508	CABLE ASSY RF.....	EA	1
2	5	PADZZ		99899	25109	COUPLER, TRANSMISSIO.....	EA	1
2	6	XBDZZ		49671	8156439-1	SPACER FLAT.....	EA	1
2	7	PADZZ	5895-01-076-7087	16179	2085-4006-00	DETECTOR, RADIO FREQ.....	EA	2
2	8	PADZZ	5310-00-933-8118	96906	MS35338-135	WASHER, LOCK.....	EA	43
2	9	PADZZ	5305-00-054-5647	96906	MS51957-13	SCREW, MACHINE.....	EA	9
2	10	XBDZZ		49671	8379652-501	HOUSING MODULE.....	EA	1
2	11	PADZZ	5310-00-928-2690	96906	MS35338-134	WASHER, LOCK.....	EA	6
2	12	PADZZ	5310-00-938-2013	96906	MS35649-224	NUT, PLAIN, HEXAGON.....	EA	2
2	13	PADZZ	5305-00-927-2062	80205	NAS1635-02-16	DELETED		
2	14	PADZZ	5330-01-115-8229	49671	8785316-1	GASKET.....	EA	1
2	15	PADZZ	5305-00-798-0862	49671	8991678-12	SCREW MACHINE.....	EA	4
2	16	PAOZZ	5305-01-070-3941	80063	SM-B-775527-4	SCEW, EXTERNALLY RE.....	EA	3
2	17	XBDZZ		49671	8679878-501	PANEL ASSY.....	EA	1
2	18	PADZZ	5985-01-076-6948	21847	AMF5913	ISOLATOR, RADIO FREQ.....	EA	3
2	19	PADZZ	5995-01-115-0830	49671	8679964-511	CABLE ASSY RF.....	EA	1
2	20	PADZZ	5935-00-724-7159	71468	D20419-16	SCREW LOCK, CONNECTO.....	EA	6
2	21	XBDZZ		49671	8156448-2	SPACER FLAT.....	EA	4
2	22	PADZZ	5310-00-595-6211	96906	MS15795-803	WASHER, FLAT.....	EA	41
2	23	XBDZZ		49671	8785334-1	PLATE ATTEN.....	EA	1
2	24	PADZZ	5310-00-722-5998	96906	MS15795-805	WASHER, FLAT.....	EA	11
2	25	PADZZ	5305-00-054-6659	96906	MS51957-35	SCREW, MACHINE.....	EA	11
2	26	PADDL	5895-01-106-0136	53432	2088	ATTENUATOR, SHELF PR.....	EA	1
2	27	PADZZ	5935-01-085-9039	26805	2088-1220-02	ADAPTER, CONNECTOR.....	EA	1
2	28	PADZZ	5935-00-498-5785	81349	M24308/1-2	CONNECTOR, RECEPTACL.....	EA	2
2	29	XBDZZ	3120-01-083-0686	80063	SM-B-889968	BUSHING, SLEEVE.....	EA	2
2	30	XBDZZ		49671	8156438-1	DELETED		
2	31	PADZZ	5995-01-115-0829	49671	8679964-509	CABLE ASSY RF.....	EA	1
2	32	PADZZ	5310-00-929-6395	96906	MS35338-136	WASHER, LOCK.....	EA	2
2	33	PADZZ	5305-00-054-6653	96906	MS51957-29	SCREW, MACHINE.....	EA	2
2	34	PADZZ	5915-01-080-9999	01456	8150FK109	FILTER, BAND, PASS.....	EA	1
2	35	PADZZ	5995-01-115-0827	49671	8679964-507	CABLE ASSY RF.....	EA	1
2	36	XBDZZ		49671	8785332-1	PLATE FILTER.....	EA	1
2	37	PADZZ	5305-00-054-5649	96906	MS51957-15	SCREW, MACHINE.....	EA	8
2	38	PADZZ	5310-00-845-5030	80205	NAS1291C08M	NUT, SELF-LOCKING, EX.....	EA	2
2	39	PADZZ	5310-00-880-5978	96906	MS15795-807	WASHER, FLAT.....	EA	5
2	40	XBDZZ		49671	8156440-1	GUIDE PIN.....	EA	2

SECTION II

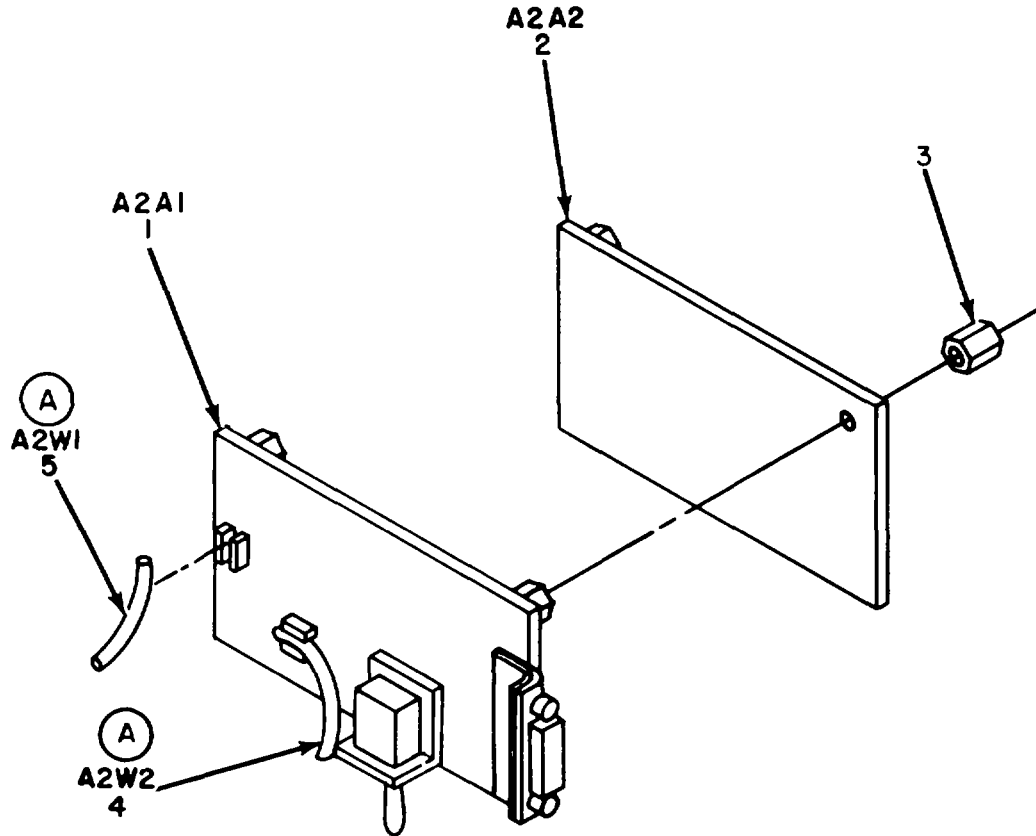
TM 11-5895-1103-24

(1) ILLUSTRATION		(2)	(3)	(4)	(5)	(6) DESCRIPTION	(7)	(8)
(a) FIG NO.	(b) ITEM NO.	SMR CODE	NATIONAL STOCK NUMBER	FSCM	PART NUMBER	USABLE ON CODE	U/M	QTY INC IN UNIT
2	41	XBDZZ		71279	1602381-01-040	TERMINAL STUD.....	EA	2
2	42	PAOZZ	6240-00-851-4352	96906	MS25237-330	LAMP, INCANDESCENT.....	EA	1
2	43	PADZZ	6210-00-935-7000	76854	08-83283-86TL	LIGHT, INDICATOR.....	EA	1
2	44	PAOZZ	5355-00-556-0145	96906	MS91528-1K2B	KNOB.....	EA	1
2	45	PADZZ	5930-01-106-0757	49671	8560083-1	SWITCH, ROTARY.....	EA	1
2	46	PADZZ	5905-00-106-3666	81349	RCR07G103JS	RESISTOR FIXED.....	EA	6
2	47	PADZZ		16179	2082-2304	ADAPTER CONNECTOR.....	EA	1
2	48	PAOZZ	6240-00-723-3378	96906	M15098/11-002	LAMP, GLOW.....	EA	1
2	49	PADZZ	6210-00-183-0576	81349	LH88/2	LIGHT, INDICATOR.....	EA	1
2	50	PAOZZ	6210-00-191-2709	81349	LC33YN2	LENS, LIGHT.....	EA	1
2	51	XBDZZ		06540	10032-A-0256-2	HANDLE BOW.....	EA	1
2	52	PADZZ	5305-00-814-1707	80205	NAS662-C2R4	SCREW, MACHINE.....	EA	2
2	53	PADZZ	5925-01-047-7510	81349	M39019/01-216	CIRCUIT BREAKER.....	EA	1
2	54	XBDZZ		80063	SM-C-937319-1	GUARD SWITCH.....	EA	1
2	55	PADZZ		96906	MS16994-79C	NUT PLAIN HEX.....	EA	1
2	56	PAFZZ	6210-00-978-4533	13812	LHC82/1GT2	LIGHT, INDICATOR.....	EA	1
2	57	PADZZ	5930-00-595-9641	07126	24011	SWITCH, CODE INDICAT.....	EA	1
2	58	PADZZ	5305-00-054-5638	96906	MS51957-4	SCREW, MACHINE.....	EA	4
2	59	PADZZ	5935-01-082-5369	26805	2080-2304	CONNECTOR.....	EA	1
2	60	PADZZ	5935-00-351-6135	81349	M24308/1-3	CONNECTOR, RECEPTACL.....	EA	1
2	61	XBDZZ		49671	8156441-1	SPACER BD MTG.....	EA	6
2	62	XBODD	5895-01-105-9340	30890	42-020789-02	CCA, UIC.....	EA	1
2	63	PADZZ	5995-01-115-0823	49671	8785250-501	WIRING HARNESS.....	EA	1
2	64	PADZZ	5305-00-054-5648	96906	MS51957-14	SCREW, MACHINE.....	EA	25
2	65	PADZZ	5305-00-054-6658	96906	MS51957-34	DELETED		
2	66	PADDD	5895-01-106-0134	49671	8679867-501	MONITOR ASSEMBLY.....	EA	1
2	67	PADZZ	5310-00-982-5000	96906	MS21045C04	NUT, SELF-LOCKING, HE.....	EA	7
2	68	PADZZ	5305-00-054-6651	96906	MS51957-27	DELETED		
2	69	PADZZ	5310-00-616-8660	80205	NAS671C6	NUT, PLAIN, HEXAGON.....	EA	4
2	70	PADZZ	5935-00-439-3748	83491	M24308/3-3	CONNECTOR, RECEPTACL.....	EA	1
2	71	PADZZ	6130-01-115-1092	57347	XW285	POWER SUPPLY.....	EA	1
2	72	PADZZ	6130-01-115-1091	57341	XE-284	POWER SUPPLY.....	EA	1
2	73	PADZZ	5305-00-054-5650	96906	MS51957-16	SCREW, MACHINE.....	EA	5
2	74	XBDZZ		49671	8785331-501	BRACKET AMPL.....	EA	1
2	75	PADDL	5895-01-076-7048	80063	SM-A-935157	AMPLIFIER, RADIO FRE.....	EA	1
2	76	PADZZ	6130-01-115-1090	57347	XW286	POWER SUPPLY +5V.....	EA	1
2	77	XBDZZ		49671	8156437-501	SPACER ISOLATOR.....	EA	1
2	78	PADZZ	5995-01-115-0826	49671	8679964-506	CABLE ASSY RF.....	EA	1
2	79	PADZZ		99899	25110	COUPLER, TRANSMISSIO.....	EA	1
2	80	PADZZ	5995-01-115-0825	49671	8679964-505	CABLE ASSY RF.....	EA	1
2	81	PADZZ	5305-00-054-5643	96906	MS51957-9	SCREW, MACHINE.....	EA	1

SECTION II

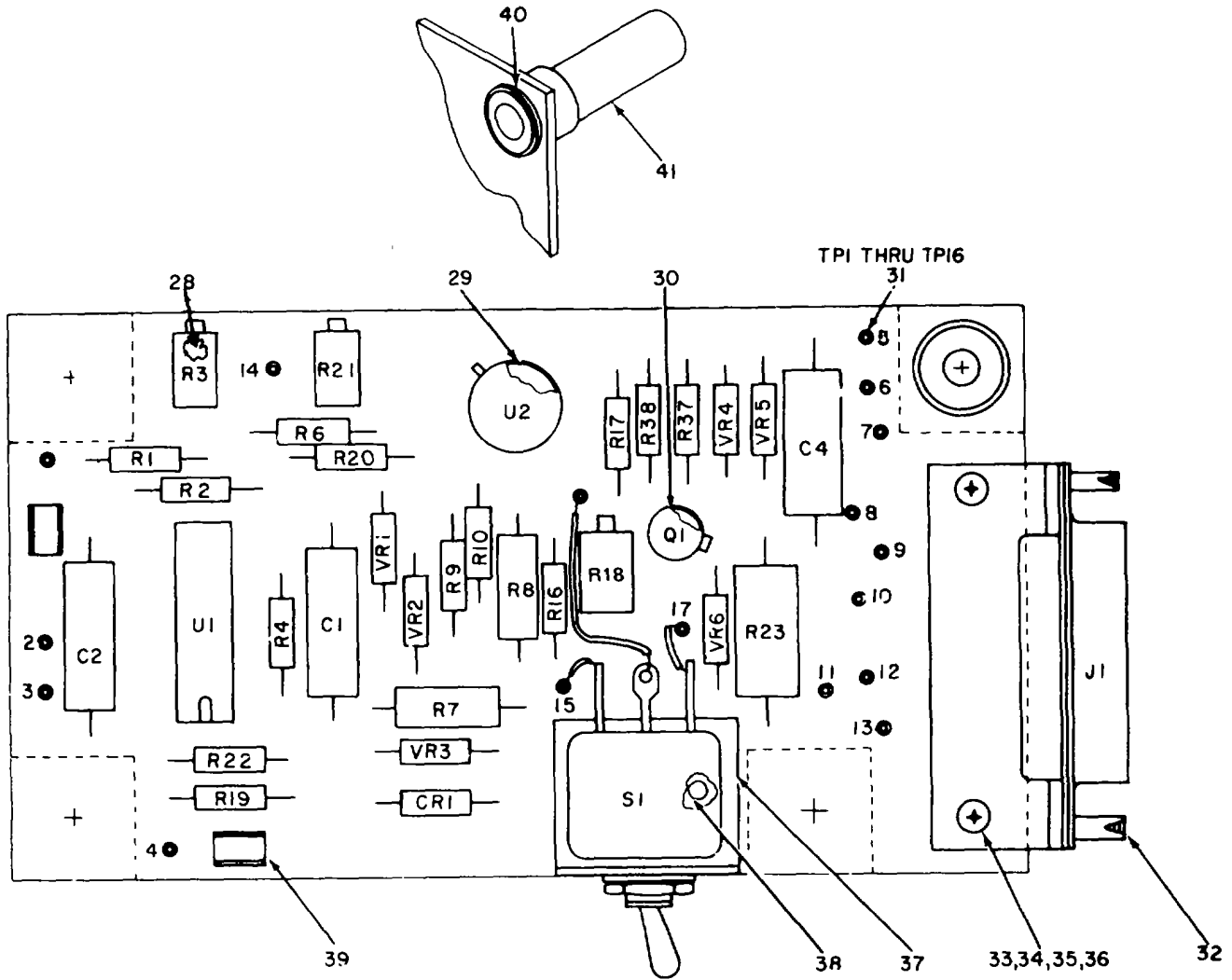
TM 11-5895-1103-24

(1) ILLUSTRATION		(2)	(3)	(4)	(5)	(6) DESCRIPTION	(7)	(8)
(a) FIG NO.	(b) ITEM NO.	SMR CODE	NATIONAL STOCK NUMBER	FSCM	PART NUMBER	USABLE ON CODE	U/M	QTY INC IN UNIT
2	82	PADZZ	5895-01-106-0190	53432	2089	ATTENUATOR, VARIABLE.....	EA	1
2	83	XBDZZ		49671	8785333-1	PLATE ATTEN.....	EA	1
2	84	XBDZZ		49671	990472-21	TERMINAL LUG	EA	53
2	85	XBDZZ	5940-00-949-3157	75382	410-JJ-3	TERMINAL BOARD.....	EA	1
2	86	XBDZZ		96906	MS410-3-GEE	MARKER STRIP.....	EA	1
2	87	PADZZ	5935-00-166-6281	81349	M39012/55-3007	CONNECTOR, PLUG, ELEC	EA	1
2	88	XBDZZ		49671	8156448-1	SPACER FLAT	EA	3
2	89	PADZZ	5305-00-054-6654	96906	MS51957-30	SCREW, MACHINE.....	EA	6
2	90	XBDZZ		49671	8679880-501	PLATE COMPONENT.....	EA	1
2	91	XBDZZ	5307-00-979-4536	46384	FHS-440-4	STUD, SELF-LOCKING.....	EA	6
2	92	XBDZZ		46384	SOS-8632-8	NUT, PLAIN, CLINCH.....	EA	2
2	93	XBDZZ	5307-00-446-5361	46384	FHS-632-6	STUD, SELF-LOCKING.....	EA	2



EL6SV012

Figure 3. APC/Monitor Assembly (Sheet 1 of 4)

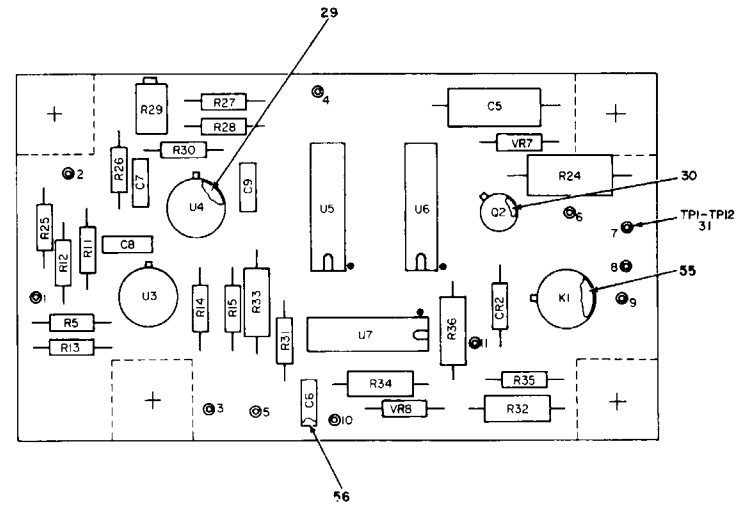


REF DES.	ITEM NO.	REF DES.	ITEM NO.	REF DES.	ITEM NO.	REF DES.	ITEM NO.	REF DES.	ITEM NO.
C1	6	R2	12	R10	11	R22	11	VR1	26
C2	7	R3	13	R16	17	R23	21	VR2	26
C4	7	R4	11	R17	18	R37	22	VR3	26
CR1	8	R6	11	R18	19	R38	11	VR4	27
J1	9	R7	14	R19	11	S1	23	VR5	27
R1	11	R8	15	R20	12	U1	24	VR6	27
		R9	16	R21	20	U2	25		

Figure 3. APC/Monitor Assembly (Sheet 2 of 4).

EL6SV013

REF DES.	ITEM NO.	REF DES.	ITEM NO.
C5	7	R27	47
C6	42	R28	18
C7	42	R29	13
C8	42	R30	45
C9	42	R31	49
CR2	8	R32	50
K1	43	R33	51
Q2	10	R34	50
R5	44	R35	11
R11	45	R36	48
R12	46	U3	52
R13	18	U4	52
R14	47	U5	53
R15	45	U6	54
R24	48	U7	53
R25	44	VR7	27
R26	45	VR8	27



EL6SV014

EL6SV014

Figure 3. APC/Monitor Assembly (Sheet 3 of 4).

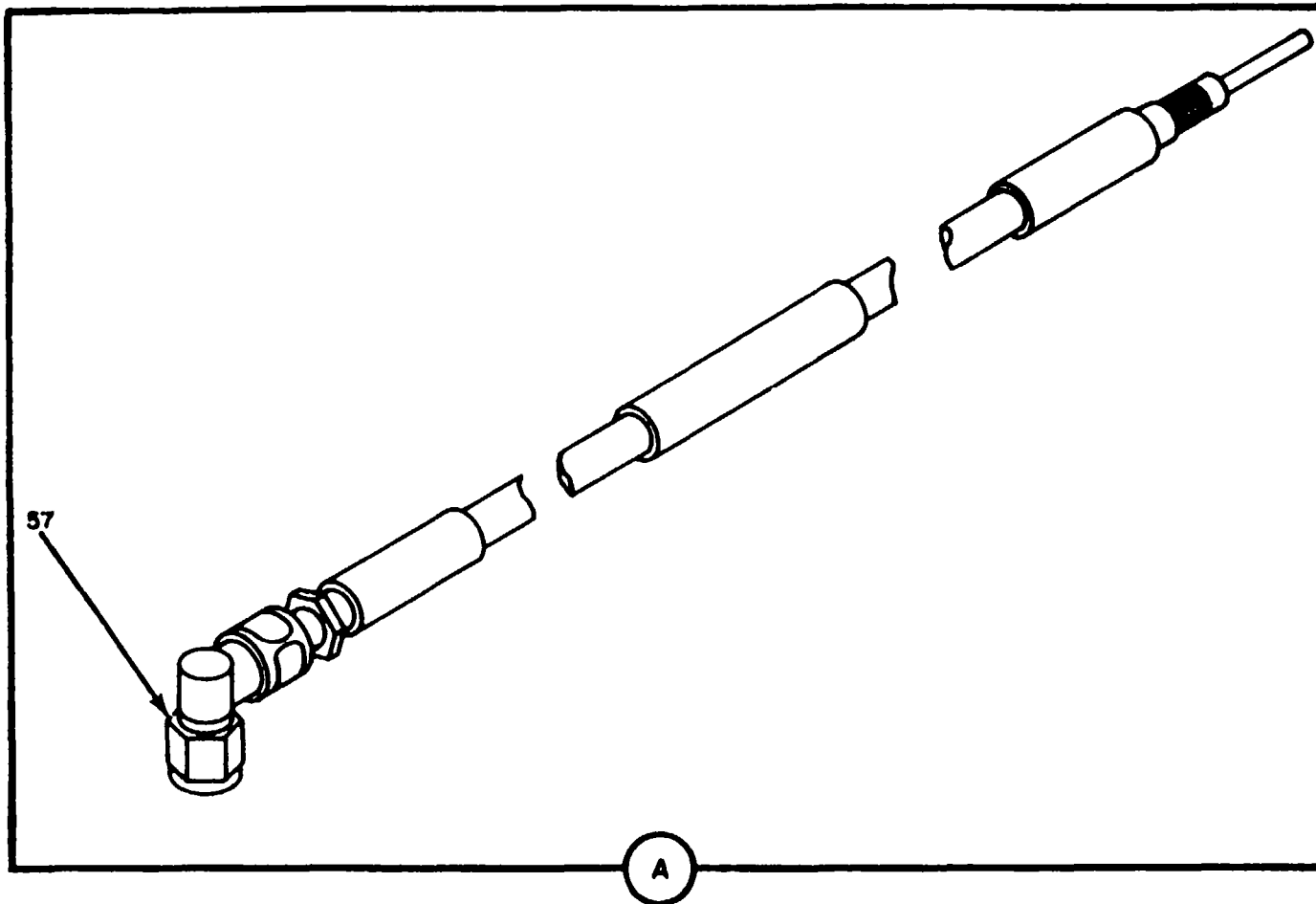


Figure 3. APC/Monitor Assembly (Sheet 4 of 4).

(1) ILLUSTRATION		(2)	(3)	(4)	(5)	(6) DESCRIPTION	(7)	(8)
(a) FIG NO.	(b) ITEM NO.	SMR CODE	NATIONAL STOCK NUMBER	FSCM	PART NUMBER	USABLE ON CODE	U/M	QTY INC IN UNIT
						GROUP 070104 APC/MONITOR ASSEMBLY		
3	1	XBDDD		49671	8679861-501	APC MON BD NO 1.....	EA	1
3	2	XBDDD		49671	8679568-501	APC MON BD NO 2.....	EA	1
3	3	XBDZZ		49671	8156435-1	SPACER FLAT.....	EA	4
3	4	XBDDD		49671	8785319-502	CABLE ASSY.....	EA	1
3	5	XBDDD		49671	8785319-501	CABLE ASSY.....	EA	1
3	6	PADZZ	5910-00-144-4381	81349	M39003/01-3024	CAPACITOR, FIXED, ELE.....	EA	1
3	7	XDDZZ	5910-00-007-2003	81349	M39003/01-3009	CAPACITOR, FIXED, ELE.....	EA	2
3	8	PADZZ		81349	JAN1N645A	SEMICONV DEV DI.....	EA	1
3	9	PADZZ	5935-01-073-0797	81349	M24308/24-38	CONNECTOR, RECEPTAC.....	EA	1
3	10	PADZZ	5961-00-951-8757	81349	JAN2N2222A	TRANSISTOR.....	EA	1
3	11	PADZZ	5905-00-110-7620	81349	RCR07G102JS	RESISTOR, FIXED, COMP.....	EA	7
3	12	PADZZ	5905-00-106-3666	81349	RCR07G103JS	RESISTOR FIXED.....	EA	2
3	13	PADZZ	5905-01-044-8473	81349	RJR26FX503M	RESISTOR, VARIABLE, N.....	EA	1
3	14	PADZZ	5905-00-419-3883	81349	RNR55C1101FS	RESISTOR, FIXED, FILM.....	EA	1
3	15	PADZZ	5905-00-419-9543	81349	RNR55C1542FS	RESISTOR, FIXED, FILM.....	EA	1
3	16	PADZZ	5905-00-485-4545	81349	RCR07G334JS	RESISTOR, FIXED, COMP.....	EA	1
3	17	PADZZ	5905-00-114-0711	81349	RCR07G472JS	RESISTOR, FIXED, COMP.....	EA	1
3	18	PADZZ	5905-00-110-7622	81349	RCR07G682JS	RESISTOR, FIXED, COMP.....	EA	1
3	19	PADZZ	5905-01-085-0728	81349	RJR26FX502P	RESISTOR, VARIABLE, N.....	EA	1
3	20	PADZZ	5905-01-044-8474	81349	RJR26FX104M	RESISTOR, VARIABLE, N.....	EA	1
3	21	PADZZ	5905-00-104-8334	81349	RCR20G331JS	RESISTOR FIXED.....	EA	1
3	22	PADZZ	5905-00-105-7764	81349	RCR07G222JS	RESISTOR, FIXED, COMP.....	EA	1
3	23	PADZZ	5930-00-225-7111	96906	MS24655-231	SWITCH, TOGGLE.....	EA	1
3	24	PADZZ	5962-00-007-4079	81349	M38510/101028CB	MICROCIRCUIT, LINEAR.....	EA	1
3	25	PADZZ	5962-00-167-6330	81349	M38510/10101BGC	MICROCIRCUIT, LINEAR.....	EA	1
3	26	PADZZ	5961-00-879-3091	81349	JAN1N755A	SEMICONDUCTOR DEVIC.....	EA	3
3	27	PADZZ	5961-00-752-6121	81349	JAN1N753A	SEMICONDUCTOR DEVIC.....	EA	3
3	28	XBDZZ		49671	SM-B-916866-2	SPACER FLAT.....	EA	9
3	29	XBDZZ		81349	M38527/1018B1	SPACER FLAT.....	EA	1
3	30	PADZZ	5999-01-119-8510	07047	10394-N	SPACER RING.....	EA	1
3	31	XBDZZ		18310	10-927-2-05	TERMINAL STUD.....	EA	16
3	32	PADZZ	5935-01-052-9436	81349	M24308/26-1	JACKSOCKET, ELECTRIC.....	EA	2
3	33	PADZZ	5305-00-054-5648	96906	MS51957-14	SCREW, MACHINE.....	EA	2
3	34	PADZZ	5310-00-595-6211	96906	MS15795-803	WASHER, FLAT.....	EA	2
3	35	PADZZ	5310-00-933-8118	96906	MS35338-135	WASHER, LOCK.....	EA	2
3	36	PADZZ	5310-00-208-3786	80205	NAS671C4	NUT, PLAIN, HEXAGON.....	EA	2
3	37	XBDZZ		49671	8156430	BRACKET SWITCH.....	EA	1
3	38	XBDZZ	5320-00-119-6754	96906	MS20470AD2-3	RIVET, SOLID.....	EA	2
3	39	XBDZZ	5940-01-081-9356	80063	SM-B-775552	TERMINAL, LUG.....	EA	2

SECTION II

TM 11-5895-1103-24

(1) ILLUSTRATION		(2)	(3)	(4)	(5)	(6) DESCRIPTION	(7)	(8)
(a) FIG NO.	(b) ITEM NO.	SMR CODE	NATIONAL STOCK NUMBER	FSCM	PART NUMBER	USABLE ON CODE	U/M	QTY INC IN UNIT
3	40	PADZZ	5310-00-753-3991	11871	CAV10-87P	WASHER FLAT	EA	4
3	41	XBDZZ		49671	8156433-1	POST BOARD MTG	EA	4
3	42	PADZZ	5910-00-010-8721	81349	M39014/02-1419	CAPACITOR, FIXED, CER.....	EA	4
3	43	PADZZ	5945-01-085-8407	81349	M39016/16-011P	RELAY SENSITIVE	EA	1
3	44	PADZZ	5905-00-126-6683	81349	RCR07G332JS	RESISTOR, FIXED, COMP	EA	2
3	45	PADZZ	5905-00-111-4727	81349	RCR07G272JS	RES FXD CMPSN	EA	4
3	46	XDDZZ	5905-00-104-8368	81349	RCR07G470JS	RESISTOR, FIXED, COMP	EA	1
3	47	PADZZ	5905-00-120-9154	81349	RCR07G471JS	RESISTOR, FIXED, COMP	EA	2
3	48	PADZZ	5905-00-104-8334	81349	RCR20G331JS	RESISTOR FIXED.....	EA	2
3	49	PADZZ	5905-00-121-9932	81349	RCR07G391JS	RESISTOR, FIXED, COMP	EA	1
3	50	PADZZ	5905-00-106-1356	81349	RCR07G152JS	RESISTOR, FIXED, COMP	EA	2
3	51	PADZZ	5905-00-131-1255	81349	RCR07G122JS	RESISTOR, FIXED, COMP	EA	1
3	52	PADZZ	5962-00-428-8070	81349	M38510/10301BGB	MICROCIRCUIT, LINEAR	EA	1
3	53	PADZZ	5962-00-318-2223	81349	M38510/00104BCB	MICROCIRCUIT, DIGITA	EA	2
3	54	PADZZ	5962-00-318-2224	81349	M38510/00103BCB	MICROCIRCUIT, DIGITA	EA	1
3	55		5999-00-410-5968	19080	RCT05030-2A	SPACER, FLAT	EA	1
3	56	XBDZZ		80063	SM-B-916863	SPACER, FLAT	EA	1
3	57	PADZZ	5935-01-095-6415	98291	50-611-5607-31	CONNECTOR, PLUG, ELEC	EA	1

REF DES.	ITEM NO.	REF DES.	ITEM NO.
C1	1	R4	8
C2	1	R5	10
C3	2	R6	8
C4	2	U1	11
C5	3	U2	12
C6	1	U3	13
C7	1	U4	14
C8	4	U5	15
J1	5	U6	16
J2	6	U7	16
Q1	7	Y1	17
R1	8	Z1	18
R2	8	Z2	18
R3	9		

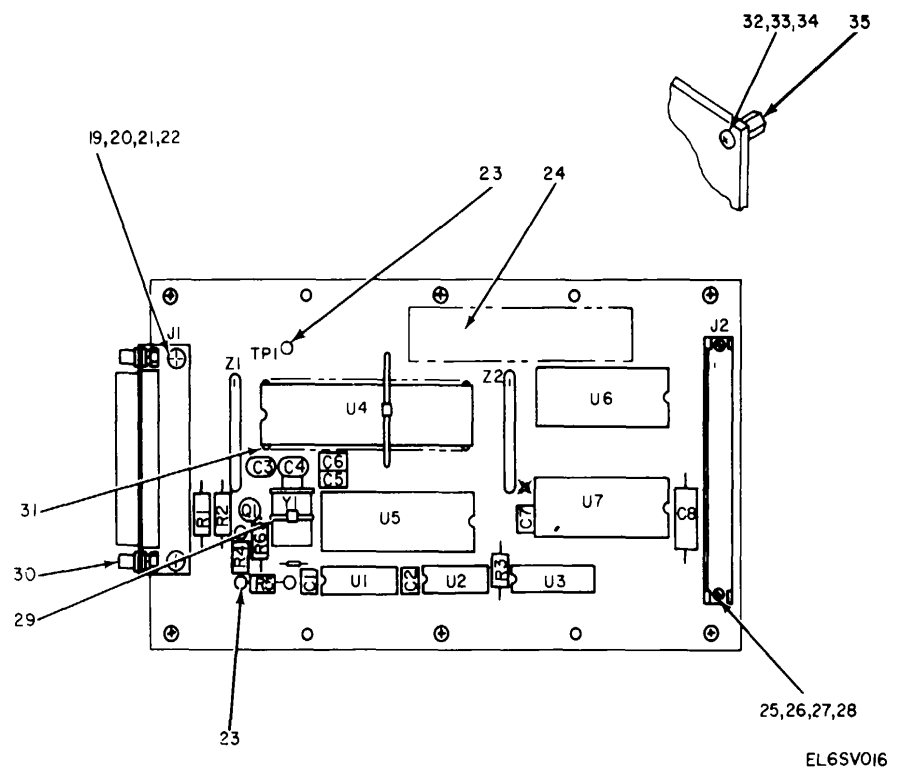


Figure 4. Universal Interface Control.

(1) ILLUSTRATION		(2)	(3)	(4)	(5)	(6) DESCRIPTION	(7)	(8)
(a) FIG NO.	(b) ITEM NO.	SMR CODE	NATIONAL STOCK NUMBER	FSCM	PART NUMBER	USABLE ON CODE	U/M	QTY INC IN UNIT
						GROUP 070105 UNIVERSAL INTERFACE CONTROL		
4	1	PADZZ	5910-00-113-5499	81349	M39014/02-1350	CAPACITOR, FIXED, CER.....	EA	4
4	2	PADZZ	5910-01-064-9674	81349	CMR04E200J0DR	CAPACITOR, FIXED, MIC.....	EA	2
4	3	PADZZ	5910-00-113-9453	81349	M39014/02-1417	CAPACITOR, FIXED, CER.....	EA	1
4	4	PADZZ	5910-00-144-4381	81349	M39003/01-3024	CAPACITOR, FIXED, ELE.....	EA	1
4	5	PADZZ	5935-01-077-5868	96906	M24308-24-39	CONNECTOR, RECEPTACL.....	EA	1
4	6	PADZZ	5935-01-087-0783	20999	3495-2002	CONNECTOR, RECEPTACL.....	EA	1
4	7	PADZZ	5961-00-925-3777	81349	JAN2N2907A	TRANSISTOR.....	EA	1
4	8	PADZZ	5905-00-120-9154	81349	RCR07G471JS	RESISTOR, FIXED, COMP.....	EA	3
4	9	PADZZ	5905-00-110-7620	81349	RCR07G102JS	RESISTOR, FIXED, COMP.....	EA	1
4	10	PADZZ	5905-00-405-7622	81349	RT26C2W501	RES VAR WW.....	EA	1
4	11	PADZZ	5962-01-097-7470	01295	SN55118J	MICROCIRCUIT, LINEAR.....	EA	1
4	12	PADZZ	5962-01-045-7489	01295	SN54LS04J	MICROCIRCUIT, DIGTA.....	EA	1
4	13	PADZZ	5962-00-369-7641	81349	M3851001306BEB	MICROCIRCUIT, DIGTA.....	EA	1
4	14	PADZZ	5962-01-112-6362	34649	MD8748	MICROCKT DGTL SELECT.....	EA	1
4	14	PADZZ	5962-01-123-9591	34649	D8748	MICROCKT DGTL SELECT.....	EA	1
4	15	PADZZ	5962-01-046-3627	34649	D8251	MICROCIRCUIT, DIGITA.....	EA	1
4	16	PADZZ	5962-01-119-7548	34649	D8243	MICROCKT DGTL.....	EA	2
4	17	PADZZ		30890	42-023952	XTAL.....	EA	1
4	18	PADZZ	5905-01-112-5366	91637	MSP10C-01-103G	RESISTOR NETWORK.....	EA	2
4	19	XBDZZ	5305-00-054-5649	96906	MS51957-15	SCREW, MACHINE.....	EA	2
4	20	XBDZZ	5310-00-880-5978	96906	MS15795-807	WASHER, FLAT, NO.4.....	EA	2
4	21	PADZZ	5310-00-933-8118	96906	MS35338-135	WASHER, LOCK.....	EA	2
4	22	PADZZ	5310-00-934-9748	96906	MS35649-244	NUT, PLAIN, HEXAGON.....	EA	2
4	23	PADZZ		00779	60599-1	CONTACT, ELECTRICAL.....	EA	1
4	24	XBDZZ		30890	30-020702-01	LAB, IDENT.....	EA	1
4	25	XBDZZ		30890	1-72UNFX1/4	SCREW MACHINE.....	EA	2
4	26	XBDZZ	5310-01-113-2182	30890	1-72UNF HEX	NUT PLAIN HEX.....	EA	2
4	27	PADZZ	5310-00-804-0141	96906	M15795-801	WASHER, FLAT.....	EA	2
4	28	PADZZ	5310-00-803-3611	70318	NO. 1	WASHER, LOCK.....	EA	2
4	29	XBDZZ	5975-00-727-5153	96906	MS3367-4-9	CABLE TIE.....	EA	2
4	30	PADZZ	5935-00-898-0494	71468	D20418-2	JACKSOCKET, ELECTRIC.....	EA	1
4	31	PADZZ	5935-01-082-1765	91506	740-AG-3D	CONNECTOR, ELECTRICA.....	EA	1
4	32	XBDZZ		88044	ANG20C6	WASHER, FLAT.....	EA	6
4	33	PADZZ	5310-00-929-6395	96906	MS35338-136	WASHER, LOCK.....	EA	6
4	34	PADZZ	5305-00-054-6652	96906	MS51957-28	SCREW, MACHINE.....	EA	6
4	35	PADZZ		06540	8217-SS-0632	POST, ELECTRICAL-MEC.....	EA	6

NATIONAL STOCK NUMBER AND PART NUMBER INDEX

STOCK NUMBER	FIG. NO.	ITEM NO.	STOCK NUMBER	FIG. NO.	ITEM NO.
5910-00-007-2003	3	7	5930-00-595-9641	2	57
5962-00-007-4079	3	24	5310-00-616-8660	2	69
5910-00-010-8721	3	42	5310-00-619-1148	1	35
5315-00-050-7577	1	76	5310-00-627-6128	1	81
5305-00-054-5638	2	58	5940-00-632-7234	1	65
5305-00-054-5640	1	46	5310-00-722-5998	1	57
5305-00-054-5643	2	81	5310-00-722-5998	2	24
5305-00-054-5644	1	19	6240-00-723-3378	2	48
5305-00-054-5646	1	27	5935-30-724-7159	2	20
5305-00-054-5647	2	9	5975-00-727-5153	4	29
5305-00-054-5648	2	64	5961-00-752-6121	3	27
5305-00-054-5648	3	33	5340-00-753-3456	1	38
5305-00-054-5649	2	37	5310-00-753-3991	3	40
5305-00-054-5649	4	19	5305-00-780-1131	1	5
5305-00-054-5650	2	73	5305-00-798-0862	2	15
5305-00-054-6652	4	34	5310-00-803-3611	4	28
5305-00-054-6653	2	33	5310-00-804-0141	4	27
5305-00-054-6654	2	89	5310-00-809-4058	1	83
5305-00-054-6659	2	25	5305-00-812-6079	2	1
5305-00-054-6669	1	2	5310-00-813-6950	1	43
5310-00-063-6716	1	77	5305-00-814-1707	2	52
5975-00-074-2072	1	40	5340-00-815-4929	1	30
5905-00-104-8334	3	21	5935-00-844-2737	1	49
5905-00-104-8334	3	48	5310-00-845-5030	2	38
5905-00-104-8368	3	46	6240-00-851-4352	2	42
5905-00-105-7764	3	22	5310-00-878-3292	1	53
5905-00-106-1278	1	69	5310-00-878-7196	1	29
5905-00-106-1356	3	50	5310-00-878-9518	1	58
5905-00-106-3666	2	46	5961-00-879-3091	3	26
5905-00-106-3666	3	12	5310-00-880-5978	1	34
5905-00-110-7620	3	11	5310-00-880-5978	2	39
5905-00-110-7620	4	9	5310-00-880-5978	4	20
5905-00-110-7622	3	18	5310-00-881-0944	1	42
5905-00-111-4727	3	45	5935-00-898-0494	4	30
5935-00-113-0352	1	26	5935-00-904-0778	1	54
5910-00-113-5499	4	1	5961-90-925-3777	4	7
5910-00-113-9453	4	3	5310-00-928-2690	2	11
5905-00-114-0711	3	17	5310-00-929-6395	1	61
5905-00-115-8055	1	70	5310-00-929-6395	2	32
5320-00-119-6754	3	38	5310-00-929-6395	4	33
5905-00-120-9154	3	47	5310-00-933-8118	2	8
5905-00-120-9154	4	8	5310-00-933-8118	3	35
5905-00-121-9932	3	49	5310-00-933-8118	4	21
5905-00-126-6683	3	44	5310-00-934-9748	4	22
5905-00-131-1255	3	51	6210-00-935-7000	2	43
5940-00-143-4793	1	82	5310-00-938-2013	2	12
5910-00-144-4381	3	6	5330-00-949-4271	1	6
5910-00-144-4381	4	4	5940-00-949-3157	2	85
5935-00-166-6281	2	87	5961-00-951-8757	3	10
5962-00-167-6330	3	25	5305-00-956-4470	1	8
6210-00-183-0576	2	49	6210-00-978-4533	2	56
5310-00-184-9161	1	72	5307-00-979-4536	2	91
6210-00-191-2709	2	50	5310-00-982-5000	2	67
5310-00-208-3786	3	36	5340-00-989-9224	1	33
5930-00-225-7111	3	23	5905-01-044-8474	3	20
5305-00-236-1782	1	55	5962-01-045-7489	4	12
5905-00-242-2018	1	68	5962-01-046-3627	4	15
5962-00-318-2223	3	53	5925-01-047-7510	2	53
5962-00-318-2224	3	54	5935-01-052-9436	3	32
5935-00-351-6135	2	60	5910-01-064-9674	4	2
5962-00-369-7641	4	13	5305-01-065-7119	1	80
5905-00-405-7622	4	10	5310-01-065-7120	1	71
5905-00-419-3883	3	14	6625-01-065-7300	1	17
5905-00-419-3904	1	67	5305-01-070-3941	2	16
5905-00-419-9543	3	15	5306-01-070-8068	1	7
5962-00-428-8070	3	52	5310-01-071-7203	1	79
5935-00-439-3748	2	70	5935-01-073-0797	3	9
5307-00-446-5361	1	31	5305-31-074-3353	1	23
5307-00-446-5361	2	93	5985-01-076-6948	2	18
5305-00-455-2575	1	74	5935-01-076-7039	2	3
5305-00-460-0673	1	32	5895-01-076-7048	2	75
5905-00-485-4545	3	16	5895-01-076-7087	2	7
5935-00-498-5785	2	28	5935-01-077-5868	4	5
5355-00-556-0145	1	20	5970-01-077-7914	1	63
5355-00-556-0145	2	44	5915-01-080-9999	2	34
5310-00-582-5965	1	78	5940-01-081-9356	3	39
5310-00-595-6211	2	22	5935-01-082-1765	4	31
5310-00-595-6211	3	34	5935-01-082-5369	2	59
5310-00-595-6761	1	44	3120-01-083-0686	2	29
5310-00-595-6761	2	2	5905-01-085-0728	3	19

SECTION IV

TM 11-5896-1103-24P

NATIONAL STOCK NUMBER AND PART NUMBER INDEX

STOCK NUMBER	FIG. NO.	ITEM NO.	STOCK NUMBER	FIG. NO.	ITEM NO.
5945-01-085-8402	3	43	5995-01-115-0823	2	63
5935-01-085-9039	2	27	5995-01-115-0825	2	80
5935-01-087-0783	4	6	5995-01-115-0826	2	78
5935-01-095-6415	3	57	5995-01-115-0827	2	35
5962-01-097-7470	4	11	5995-01-115-0828	2	4
5895-01-105-9340	2	62	5995-01-115-0829	2	31
5895-01-106-0134	2	66	5995-01-115-0830	2	19
5895-01-106-0136	2	26	6130-01-115-1090	2	76
5895-01-106-0190	2	82	6130-01-115-1091	2	72
5930-01-106-0757	2	45	6130-01-115-1092	2	71
5930-01-106-0758	1	15	5330-01-115-8229	1	25
5930-01-106-0759	1	16	5330-01-115-8229	2	14
5330-01-107-3322	1	24	5962-01-119-7548	4	16
5895-01-108-0452	1	12	5999-01-119-8510	3	30
5905-01-112-5366	4	18	5995-01-123-1780	1	11
5962-01-112-6362	4	14	5962-01-123-9591	4	14
5310-01-113-2182	4	26			

FSCM	PART NUMBER	FIGURE NO.	ITEM NO.	FSCM	PART NUMBER	FIGURE NO.	ITEM NO.
21847	AMF5913	2	18	96906	MS35338-135	4	21
88044	ANG20C6	4	32	96906	MS35338-136	1	61
11871	CAV10-87P	3	40	96906	MS35338-136	2	32
81349	CMR04E200J0DR	4	2	96906	MS35338-136	4	33
71468	D20418-2	4	30	96906	MS35338-44	1	78
71468	D20419-16	2	20	90906	MS35426-14	1	77
34649	D8243	4	16	96906	MS35649-224	2	12
34649	D8251	4	15	96906	MS35649-244	4	22
34649	D8748	4	14	96906	MS410-3-GEE	2	86
46384	FHS-440-4	2	91	96906	MS51957-11	1	19
46384	FHS-632-6	1	31	96906	MS51957-12	1	27
46384	FHS-632-6	2	93	96906	MS51957-128	1	74
81349	JAN1N645A	3	8	96906	MS51957-13	2	9
81349	JAN1N753A	3	27	96906	MS51957-14	2	64
81349	JANIN755A	3	26	96906	MS51957-14	3	33
81349	JAN2N2222A	3	10	96906	MS51957-15	2	37
81349	JAN2N2907A	4	7	96906	MS51957-15	4	19
81349	LC33YN2	2	50	96906	MS51957-16	2	73
13812	LHC82/1GT2	2	56	96906	MS51957-28	4	34
81349	LH88/2	2	49	96906	MS51951-29	2	33
51397	LL15215	1	22	96906	MS51957-30	2	89
34649	MD8748	4	14	96906	MS51957-35	2	25
91637	MSP10C-01-103G	4	18	96906	MS51957-4	2	58
96906	MS15795-801	4	27	96906	MS51957-44	1	2
96906	MS15795-802	1	44	96906	MS51957-6	1	46
96906	MS15795-802	2	2	96906	MS51957-9	2	81
96906	MS15795-803	2	22	96906	M59048-35	1	76
96906	MS15195-803	3	34	96906	MS91528-1K2B	1	20
96906	MS15795-805	1	57	96906	MS91528-1K2B	2	44
96906	MS15795-805	2	24	96906	M15098/11-002	2	48
96906	MS15795-807	1	34	96906	M24308-24-39	4	5
96906	MS15795-807	2	39	81349	M24308/1-2	2	28
96906	MS15795-807	4	20	81349	M24308/1-3	1	41
96906	MS15795-808	1	35	81349	M24308/1-3	2	60
96906	MS16994-79C	2	55	81349	M24308/24-38	3	9
96906	MS20470AD2-3	3	38	81349	M24308/26-1	3	32
96906	MS21043-04	1	53	81349	M24308/3-3	2	70
96906	MS21043-08	1	29	81349	M38510/00103BCB	3	54
96906	MS21043-5	2	42	81349	M38510/00104BCB	3	53
96906	MS21045C04	2	67	81349	M38510/01306BEB	4	13
96906	MS21209-C0815	1	30	81349	M38510/10101BGC	3	25
96906	MS24655-231	3	23	81349	M38510/10102BCB	3	24
96906	MS24693C72	1	5	81349	M38510/10301BGB	3	52
96906	MS25036-110	1	82	81349	M38527/1018B1	3	29
96906	MS25237-330	2	42	81349	M39003/01-3009	3	7
96906	MS25281R2	1	38	81349	M39003/01-3024	3	6
96906	MS25281R6	1	33	81349	M39003/01-3024	4	4
96906	MS27183-10	1	83	81349	M39012/25-0011	1	26
96906	MS3110E12-10S	1	49	81349	M39012/55-3007	2	87
96906	MS3110E12-3P	1	54	81349	M39014/02-1350	4	1
96906	MS3212-25	1	8	81349	M39014/02-1417	4	3
96906	MS3367-1-9	1	40	81349	M39014/02-1419	3	42
96906	MS3367-4-9	4	29	81349	M39016/16-011P	3	43
96906	MS35333-80	1	72	81349	M39019/01-216	2	53
96906	MS35335-35	1	81	80205	NAS1291C02M	1	43
96906	MS35338-134	2	11	80205	NAS1291C06M	1	58
96906	MS35338-135	2	8	80205	NAS1291C08M	2	38
96906	MS35338-135	3	35	80205	NAS1598C3Y	1	6

NATIONAL STOCK NUMBER AND PART NUMBER INDEX

FSCM	PART NUMBER	FIGURE NO.	ITEM NO.	FSCM	PART NUMBER	FIGURE NO.	ITEM NO.
80205	NAS1635-02-20	2	1	07126	24011	2	57
80205	NAS1635-04-7	1	55	99899	25109	2	5
80205	NAS1635-3-7	1	32	99899	25110	2	79
80205	NAS662-C2R4	2	52	65092	268527	1	17
80205	NAS671C4	3	36	30890	30-020702-01	4	24
80205	NAS6711C6	2	69	20999	3495-2002	4	6
70318	NO.1	4	28	81349	37TBLD16	1	66
76854	08-83283-86TL	2	43	81349	37TBLD5	1	59
81349	RCR07G102JS	3	11	75382	410-JJ-3	2	85
81349	RCR07G102JS	4	9	30890	42-020789-02	2	62
81349	RCR07G103JS	2	46	30890	42-023952	4	17
81349	RCR07G103JS	3	12	98291	50-611-5607-31	3	57
81349	RCR07G122JS	3	51	78189	511-250100-50	1	79
81349	RCR07G123JS	1	69	75382	600J	1	65
81349	RCR07G152JS	3	50	00779	60599-1	4	23
81349	RCR07G222JS	3	22	91506	740-AG-3D	4	31
81349	RCR07G272JS	3	45	01456	8150FK109	2	34
81349	RCR07G332JS	3	44	49671	8156430	3	37
81349	RCR07G334JS	3	16	49671	8156433-1	3	41
81349	RCR07G391JS	3	49	49671	8156435-1	3	3
81349	RCR07G393JS	1	70	49671	8156437-501	2	77
81349	RCR07G470JS	3	46	49671	8156439-1	2	6
81349	RCR07G471JS	3	47	49671	8156440-1	2	40
81349	RCR07G471JS	4	8	49671	8156441-1	2	61
81349	RCR07G472JS	3	17	49671	8156448-1	2	88
81349	RCR07G682JS	3	18	49671	8156448-2	2	21
81349	RCR20G331JS	3	21	49671	8158972-501	1	28
81349	RCR20G331JS	3	48	49671	8158973-1	1	45
81349	RJR20FX502P	3	19	06540	8217-SS-0632	4	35
81349	RJR26FX503P	3	20	49671	8376328-501	1	3
81349	RNR55C1101FS	3	14	49671	8379652-501	2	10
81349	RNR55C1542FS	3	15	49671	8557578-40	1	18
81349	RNR55C2003FS	1	68	49671	8560083-1	2	45
81349	RNR60C4873FS	1	67	49671	8560084-1	1	16
81349	RT26C2W501	4	10	49671	8560085-1	1	15
80063	SM-A-935157	2	75	49671	8677042-501	1	12
80063	SM-A-936547-37	1	11	49671	8679840-1	1	14
80063	SM-B-775477	1	56	49671	8679840-501	1	13
80063	SM-B-775527-4	2	16	49671	8679841-1	1	1
80063	SM-B-775527-5	1	23	49671	8679842-501	1	37
80063	SM-B-775537-2	1	63	49671	8679843-501	1	4
80063	SM-B-775552	3	39	49671	8679861-501	3	1
80063	SM-B-775557	1	80	49671	8679867-501	2	66
80063	SM-B-777826	1	73	49671	8679868-501	3	2
80063	SM-B-777831	1	71	49671	8679878-501	2	17
80063	SM-B-889968	2	29	49671	8679880-501	2	90
80063	SM-B-916863	3	56	49671	8679944-4	1	48
49671	SM-B-916866-2	3	28	49671	8679945-4	1	39
80063	SM-C-775486-6	1	7	49671	8679964-505	2	80
80063	SM-C-890627-12	1	64	49671	8679964-506	2	78
80063	SM-C-890627-13	1	60	49671	8679964-507	2	35
80063	SM-C-936705-1	1	75	49671	8679964-508	2	4
80063	SM-C-937319-1	2	54	49671	8679964-509	2	31
01295	SN54LS04J	4	12	49671	8679964-511	2	19
01295	SN55118J	4	11	49671	8679970-501	1	10
46384	SOS-8632-8	2	92	49671	8679970-7	1	24
57347	XE-284	2	72	49671	8783487-501	1	47
57347	XW285	2	71	49671	8783488-501	1	36
57347	XW286	2	76	49671	8783489-501	1	51
30890	1-72UNF HEX	4	26	49671	8783489-502	1	52
30890	1-72UNFX1/4	4	25	49671	8783491-501	1	50
18310	10-927-2-05	3	31	49671	8785250-501	2	63
06540	10032-A-0256-2	2	51	49671	8785316-1	1	25
07047	10394-N	3	30	49671	8785316-1	2	14
06540	10859-A-1024-2	1	9	49671	8785319-501	3	5
71279	160-2381-01-04-0	2	41	49671	8785319-502	3	4
26805	2080-2304	2	59	49671	8785331-501	2	74
16179	2082-2304	2	47	49671	8785332-1	2	36
16179	2085-4006-00	2	7	49671	8785333-1	2	83
53432	2088	2	26	49671	8785334-1	2	23
02154	2088-0000-00	2	3	49671	8991678-12	2	15
26805	2088-1220-02	2	27	49671	990472-21	2	84
53432	2089	2	82				

By Order of the Secretary of the Army:

E. C. MEYER
General, United States Army
Chief of Staff

Official:

ROBERT M. JOYCE
Major General, United States Army
The Adjutant General

* U.S. GOVERNMENT PRINTING OFFICE: 1982-664-028/1487

RECOMMENDED CHANGES TO EQUIPMENT TECHNICAL PUBLICATIONS



THEN... JOT DOWN THE DOPE ABOUT IT ON THIS FORM, CAREFULLY TEAR IT OUT, FOLD IT AND DROP IT IN THE MAIL!

SOMETHING WRONG WITH THIS PUBLICATION?

FROM: (PRINT YOUR UNIT'S COMPLETE ADDRESS)

DATE SENT

PUBLICATION NUMBER

PUBLICATION DATE

PUBLICATION TITLE

BE EXACT... PIN-POINT WHERE IT IS

PAGE NO.

PARA-GRAPH

FIGURE NO.

TABLE NO.

IN THIS SPACE TELL WHAT IS WRONG AND WHAT SHOULD BE DONE ABOUT IT:

TEAR ALONG PERFORATED LINE

PRINTED NAME, GRADE OR TITLE, AND TELEPHONE NUMBER

SIGN HERE:

DA FORM 2028-2
JUL 79

PREVIOUS EDITIONS
ARE OBSOLETE.

P.S.—IF YOUR OUTFIT WANTS TO KNOW ABOUT YOUR RECOMMENDATION MAKE A CARBON COPY OF THIS AND GIVE IT TO YOUR HEADQUARTERS.

